

NOTE: VULKEM 950NF MAY BE USED AS A TOPCOAT IN AREAS WITH NO U.V.

The architecture, engineering, and design of the project using the Tremco products are the responsibility of the project's design professional. All products and systems must comply with local building codes and standards. This detail is for general information and guidance only and Tremco specifically disclaims any liability for the use of this detail. The project design professional determines, in its sole discretion, whether this detail or a functionally equivalent detail is best suited for the project. This detail is subject to change without notice. Contact Tremco to ensure you have the most recent version.

Vulkem 350FC Pedestrian Coating



Tremco Technical Support: 866-209-2404

Detail: Vulkem 350FC Pedestrian System at Sliding Door and Balcony

Drawn by: KAB

Checked by: EL

Scale: NTS

Date: 1/17/2023

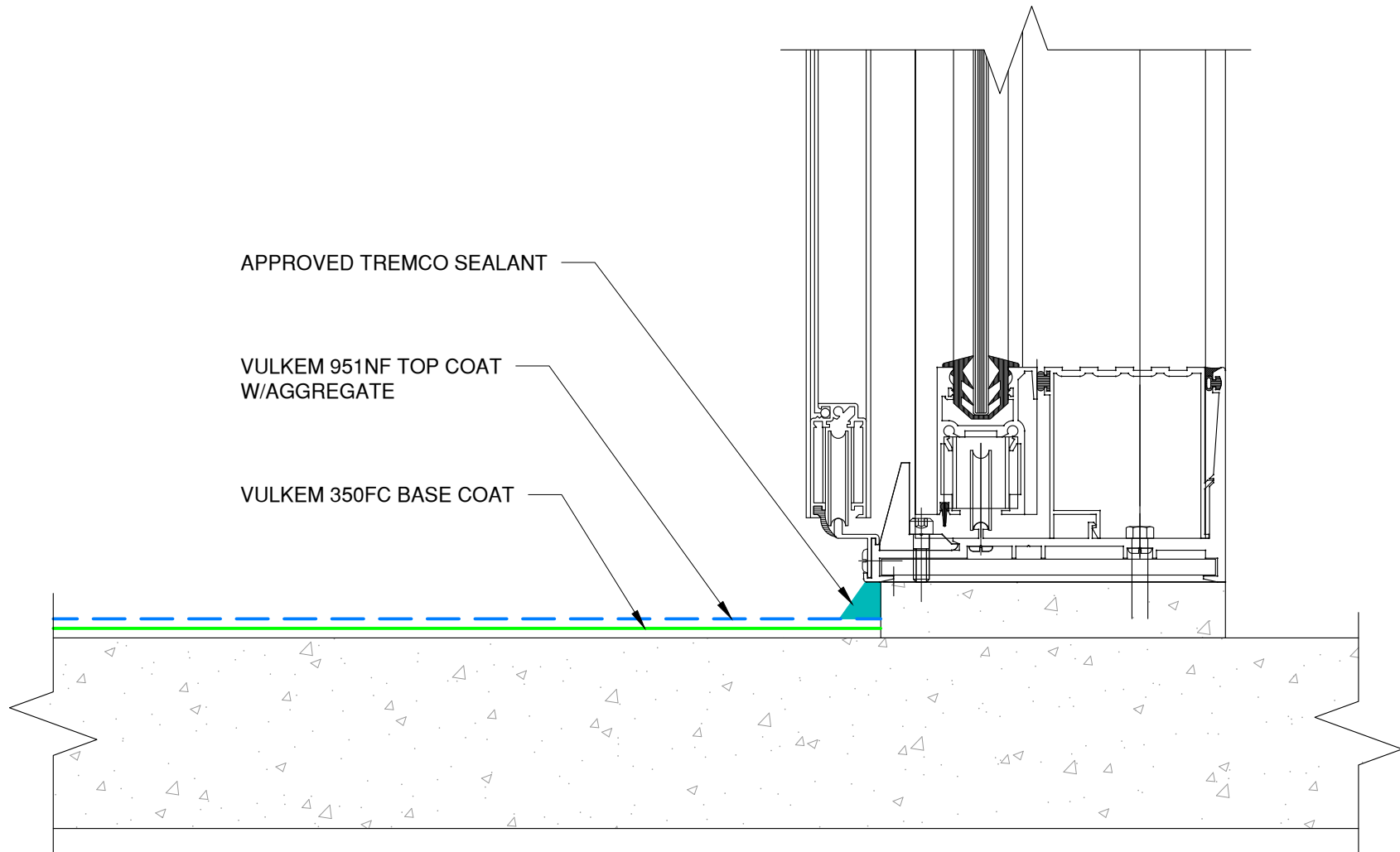
File Name:

350FC-P-B-01



Construction Products Group

www.tremcocpg.com



NOTE: VULKEM 950NF MAY BE USED AS A TOPCOAT IN AREAS WITH NO U.V.

The architecture, engineering, and design of the project using the Tremco products are the responsibility of the project's design professional. All products and systems must comply with local building codes and standards. This detail is for general information and guidance only and Tremco specifically disclaims any liability for the use of this detail. The project design professional determines, in its sole discretion, whether this detail or a functionally equivalent detail is best suited for the project. This detail is subject to change without notice. Contact Tremco to ensure you have the most recent version.

Vulkem 350FC Pedestrian Coating



Tremco Technical Support: 866-209-2404

Detail: Vulkem 350FC Pedestrian System at Sliding Door at Balcony/Deck

Drawn by: KAB

Checked by: EL

Scale: NTS

Date: 1/17/2023

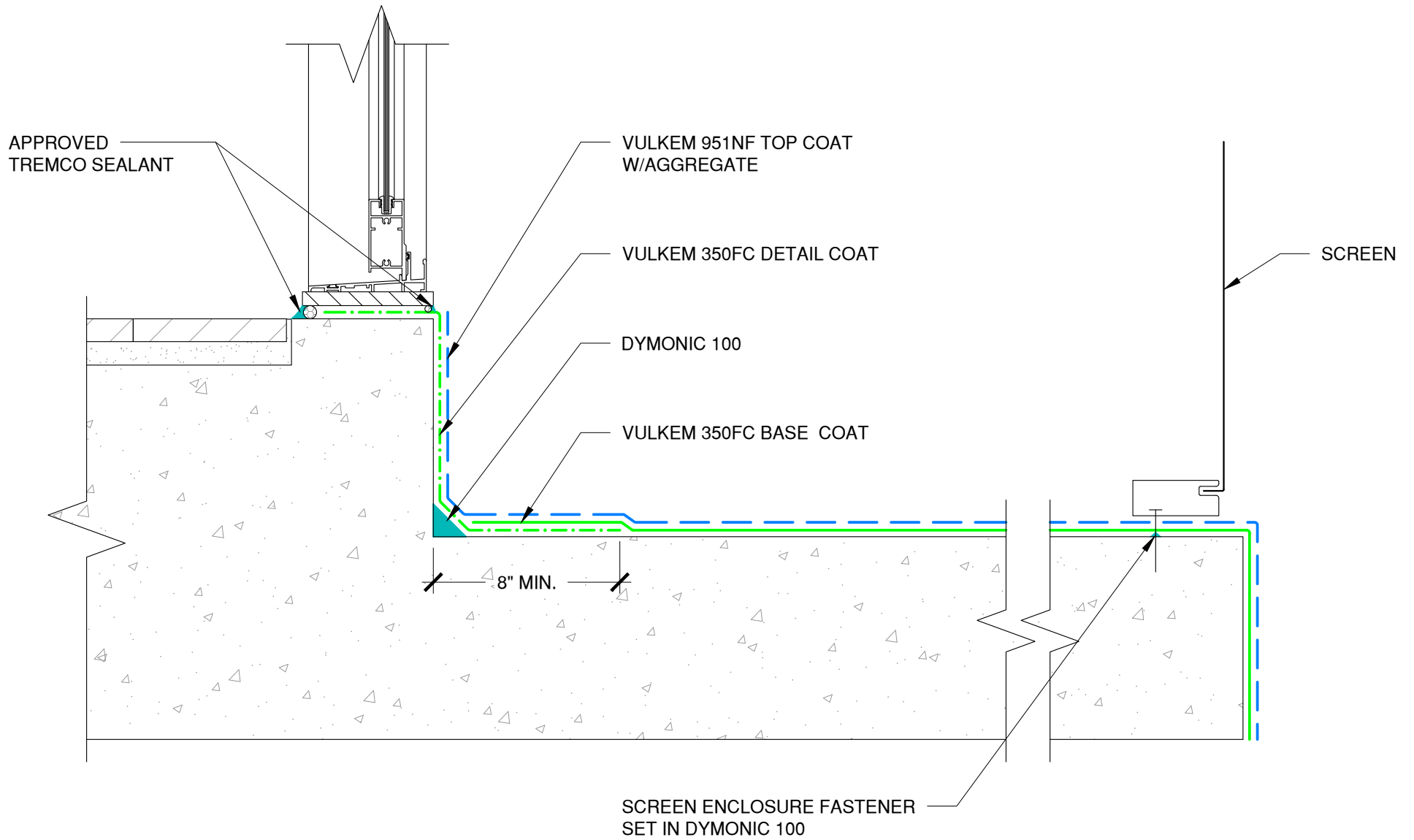
File Name:

350FC-P-B-02



Construction Products Group

www.tremcocpg.com



NOTE: VULKEM 950NF MAY BE USED AS A TOPCOAT IN AREAS WITH NO U.V.

The architecture, engineering, and design of the project using the Tremco products are the responsibility of the project's design professional. All products and systems must comply with local building codes and standards. This detail is for general information and guidance only and Tremco specifically disclaims any liability for the use of this detail. The project design professional determines, in its sole discretion, whether this detail or a functionally equivalent detail is best suited for the project. This detail is subject to change without notice. Contact Tremco to ensure you have the most recent version.

Vulkem 350FC Pedestrian Coating



Tremco Technical Support: 866-209-2404

Detail: Vulkem 350FC Pedestrian System at Balcony with Screen

Drawn by: KAB

Checked by: EL

Scale: NTS

Date: 1/18/2023

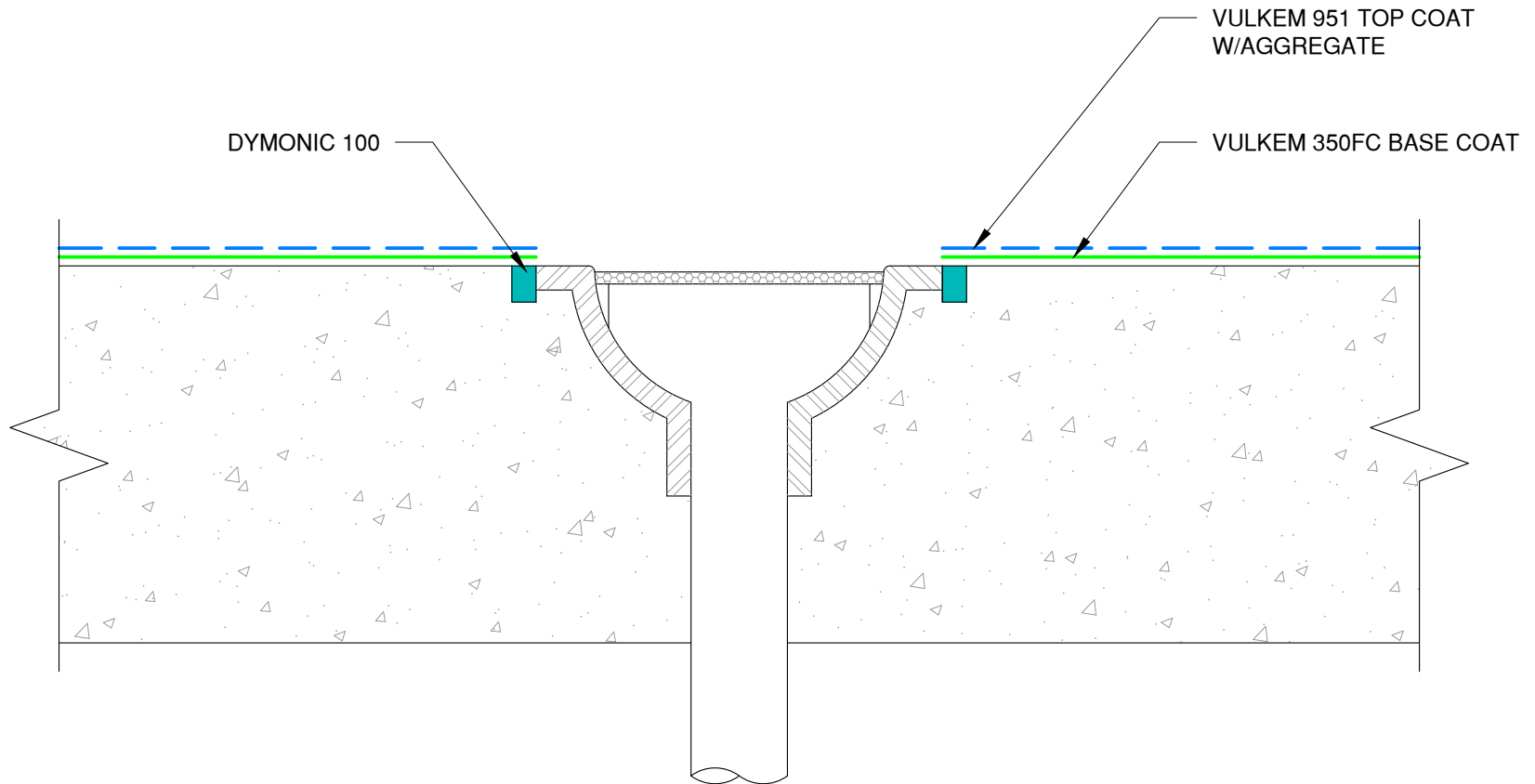
File Name:

350FC-P-B-03



Construction Products Group

www.tremcocpg.com



NOTE: VULKEM 950NF MAY BE USED AS A TOPCOAT IN AREAS WITH NO U.V.

THERE ARE SEVERAL TECHNIQUES FOR INSTALLATION AROUND DRAINS. YOU MAY ALSO TAKE THE VULKEM MEMBRANE DOWN INTO THE DRAIN ASSEMBLY. THE DRAIN ASSEMBLY MUST BE BLOCKED IF THIS APPLICATION IS PREFERRED. THE METAL OR PLASTIC DRAIN SHOULD BE SCUFFED AND CLEANED AND PRIMED WITH TREMCO'S TREMPRIME NON POROUS PRIMER.

The architecture, engineering, and design of the project using the Tremco products are the responsibility of the project's design professional. All products and systems must comply with local building codes and standards. This detail is for general information and guidance only and Tremco specifically disclaims any liability for the use of this detail. The project design professional determines, in its sole discretion, whether this detail or a functionally equivalent detail is best suited for the project. This detail is subject to change without notice. Contact Tremco to ensure you have the most recent version.

Vulkem 350FC Pedestrian Coating



Tremco Technical Support: 866-209-2404

Detail: Vulkem 350FC Pedestrian System at Drain

Drawn by: KAB

Checked by: EL

Scale: NTS

Date: 1/18/2023

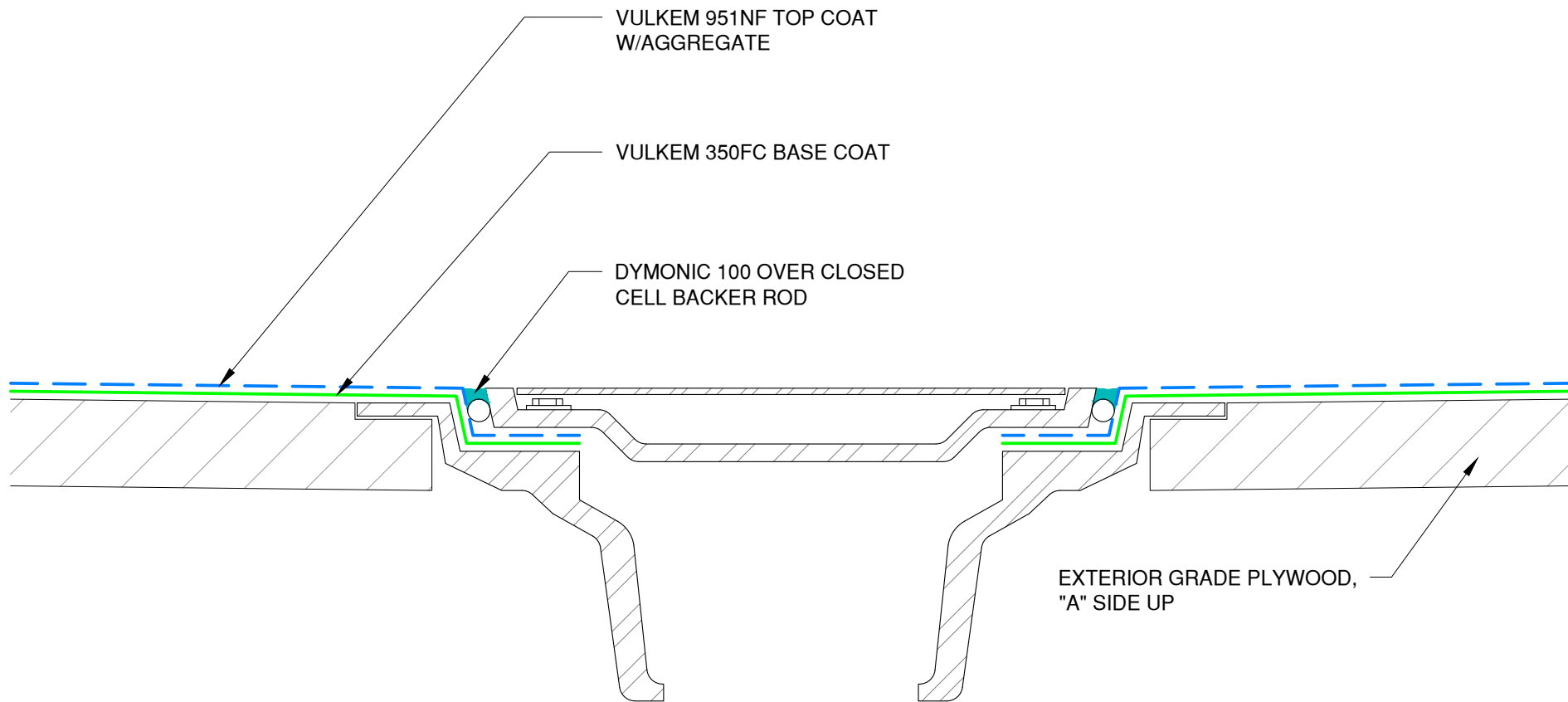
File Name:

350FC-P-D-01



Construction Products Group

www.tremcocpg.com



NOTE: VULKEM 950NF MAY BE USED AS A TOPCOAT IN AREAS WITH NO U.V.

DRAIN MUST BE MECHANICALLY SECURED TO ALLOW NO MOVEMENT IN DECKING

The architecture, engineering, and design of the project using the Tremco products are the responsibility of the project's design professional. All products and systems must comply with local building codes and standards. This detail is for general information and guidance only and Tremco specifically disclaims any liability for the use of this detail. The project design professional determines, in its sole discretion, whether this detail or a functionally equivalent detail is best suited for the project. This detail is subject to change without notice. Contact Tremco to ensure you have the most recent version.

Vulkem 350FC Pedestrian Coating



Tremco Technical Support: 866-209-2404

Detail: Vulkem 350FC Pedestrian System at Drain (Plywood Deck)

Drawn by: KAB

Checked by: EL

Scale: NTS

Date: 1/18/2023

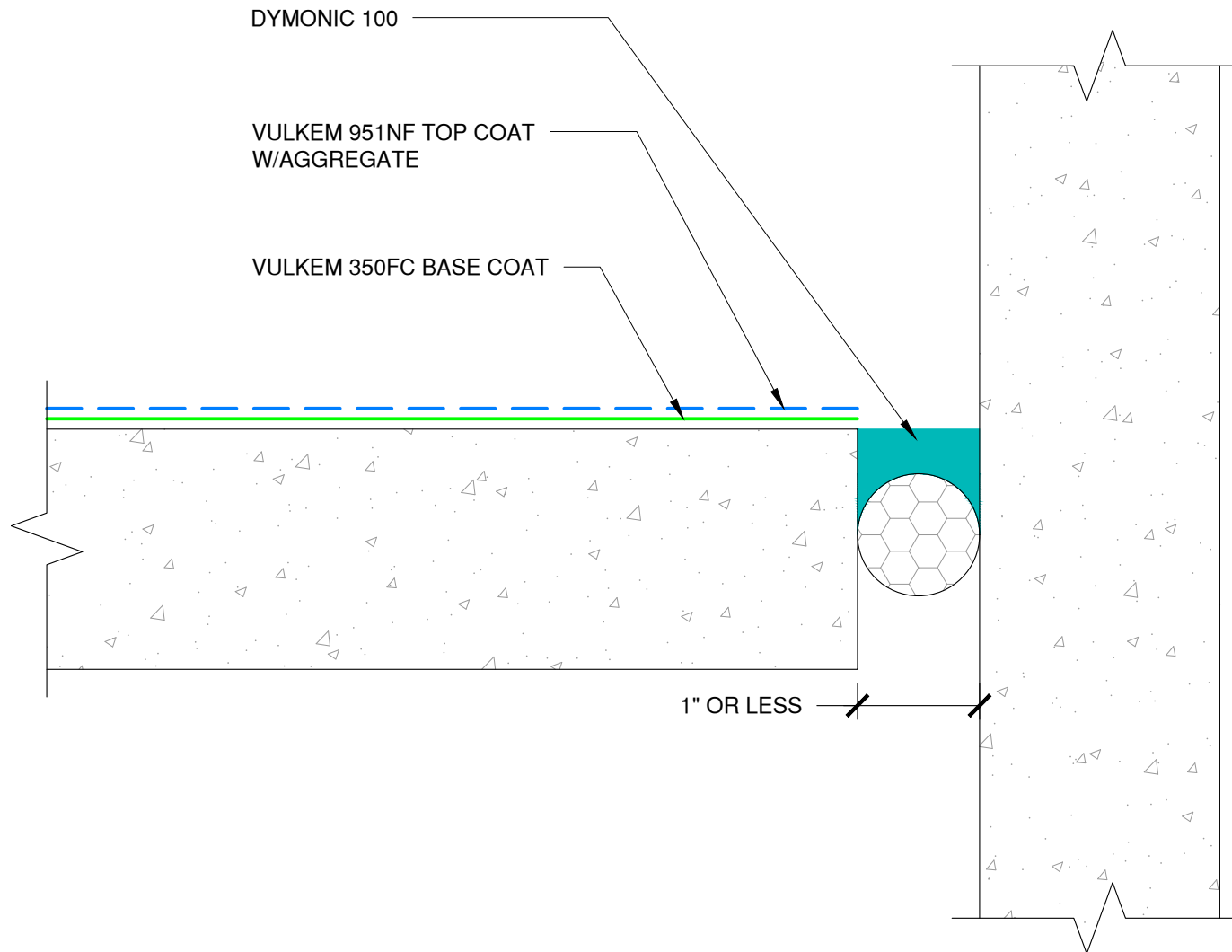
File Name:

350FC-P-D-02



Construction Products Group

www.tremcocpg.com



NOTE: VULKEM 950NF MAY BE USED AS A TOPCOAT IN AREAS WITH NO U.V.

The architecture, engineering, and design of the project using the Tremco products are the responsibility of the project's design professional. All products and systems must comply with local building codes and standards. This detail is for general information and guidance only and Tremco specifically disclaims any liability for the use of this detail. The project design professional determines, in its sole discretion, whether this detail or a functionally equivalent detail is best suited for the project. This detail is subject to change without notice. Contact Tremco to ensure you have the most recent version.

Vulkem 350FC Pedestrian Coating



Tremco Technical Support: 866-209-2404

Detail: Vulkem 350FC Pedestrian System at Floor to Wall Expansion Joint

Drawn by: KAB

Checked by: EL

Scale: NTS

Date: 1/18/2023

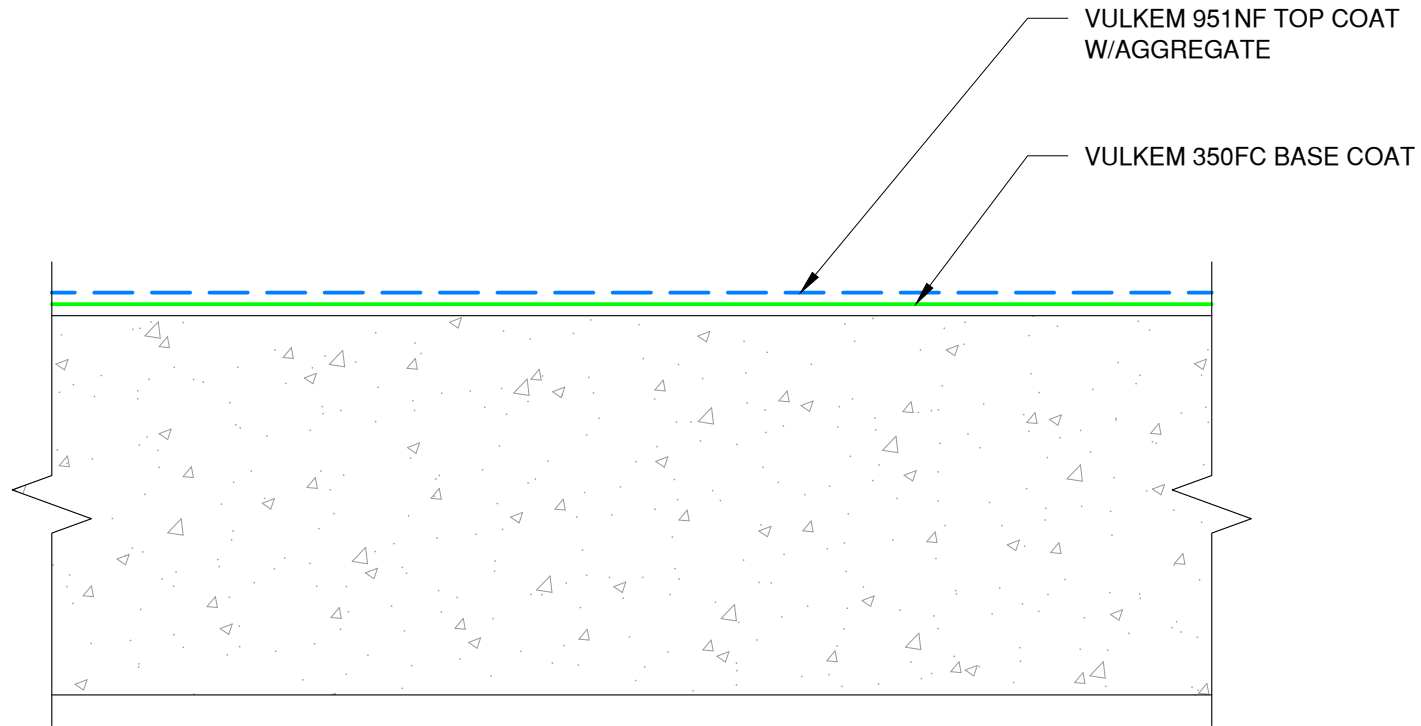
File Name:

350FC-P-EJ-FW-01



Construction Products Group

www.tremcocpg.com



NOTE: VULKEM 950NF MAY BE USED AS A TOPCOAT IN AREAS WITH NO U.V.

The architecture, engineering, and design of the project using the Tremco products are the responsibility of the project's design professional. All products and systems must comply with local building codes and standards. This detail is for general information and guidance only and Tremco specifically disclaims any liability for the use of this detail. The project design professional determines, in its sole discretion, whether this detail or a functionally equivalent detail is best suited for the project. This detail is subject to change without notice. Contact Tremco to ensure you have the most recent version.

Vulkem 350FC Pedestrian Coating



Tremco Technical Support: 866-209-2404

Detail: Typical Vulkem 350FC Pedestrian System Deck Coating

Drawn by: KAB

Checked by: EL

Scale: NTS

Date: 1/17/2023

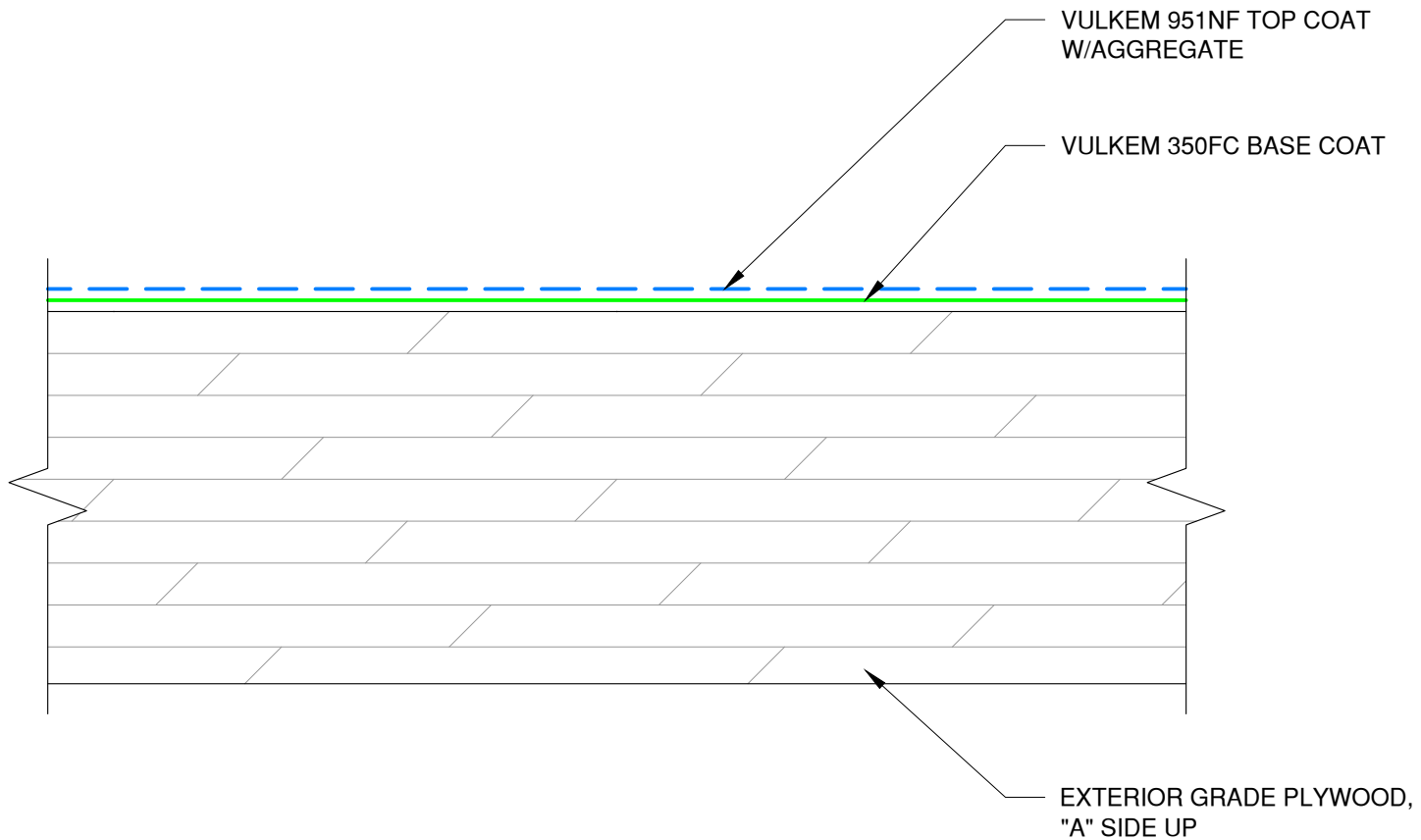
File Name:

350FC-P-G-01



Construction Products Group

www.tremcocpg.com



NOTE: VULKEM 950NF MAY BE USED AS A TOPCOAT IN AREAS WITH NO U.V.

The architecture, engineering, and design of the project using the Tremco products are the responsibility of the project's design professional. All products and systems must comply with local building codes and standards. This detail is for general information and guidance only and Tremco specifically disclaims any liability for the use of this detail. The project design professional determines, in its sole discretion, whether this detail or a functionally equivalent detail is best suited for the project. This detail is subject to change without notice. Contact Tremco to ensure you have the most recent version.

Vulkem 350FC Pedestrian Coating



Tremco Technical Support: 866-209-2404

Detail: Typical Vulkem 350FC Pedestrian System on Plywood Deck

Drawn by: KAB

Checked by: EL

Scale: NTS

Date: 1/17/2023

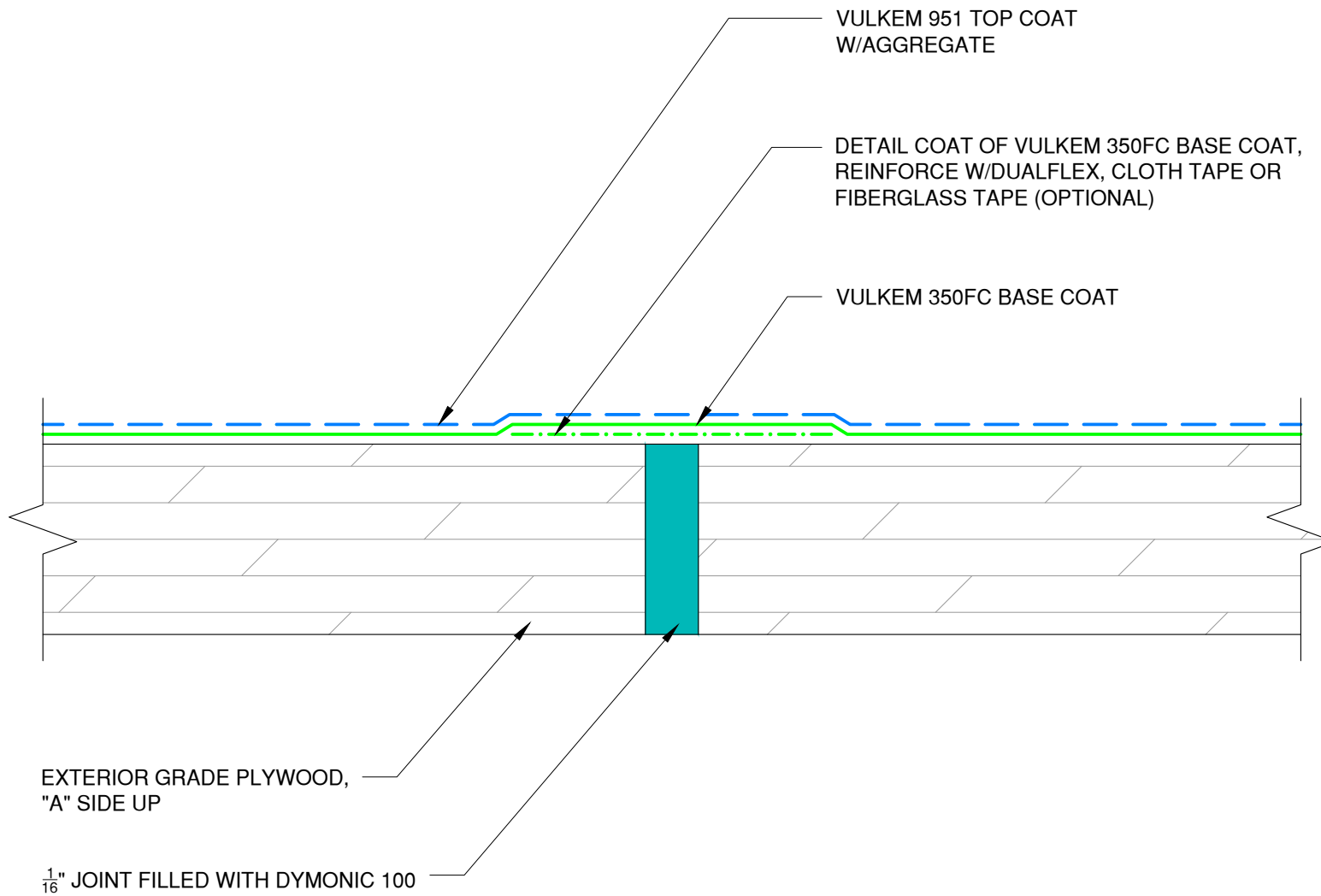
File Name:

350FC-P-G-02



Construction Products Group

www.tremcocpg.com



NOTE: VULKEM 950NF MAY BE USED AS A TOPCOAT IN AREAS WITH NO U.V.

The architecture, engineering, and design of the project using the Tremco products are the responsibility of the project's design professional. All products and systems must comply with local building codes and standards. This detail is for general information and guidance only and Tremco specifically disclaims any liability for the use of this detail. The project design professional determines, in its sole discretion, whether this detail or a functionally equivalent detail is best suited for the project. This detail is subject to change without notice. Contact Tremco to ensure you have the most recent version.

Vulkem 350FC Pedestrian Coating



Tremco Technical Support: 866-209-2404

Detail: Typical Vulkem 350FC Pedestrian System Joint Detail on Plywood

Drawn by: KAB

Checked by: EL

Scale: NTS

Date: 1/18/2023

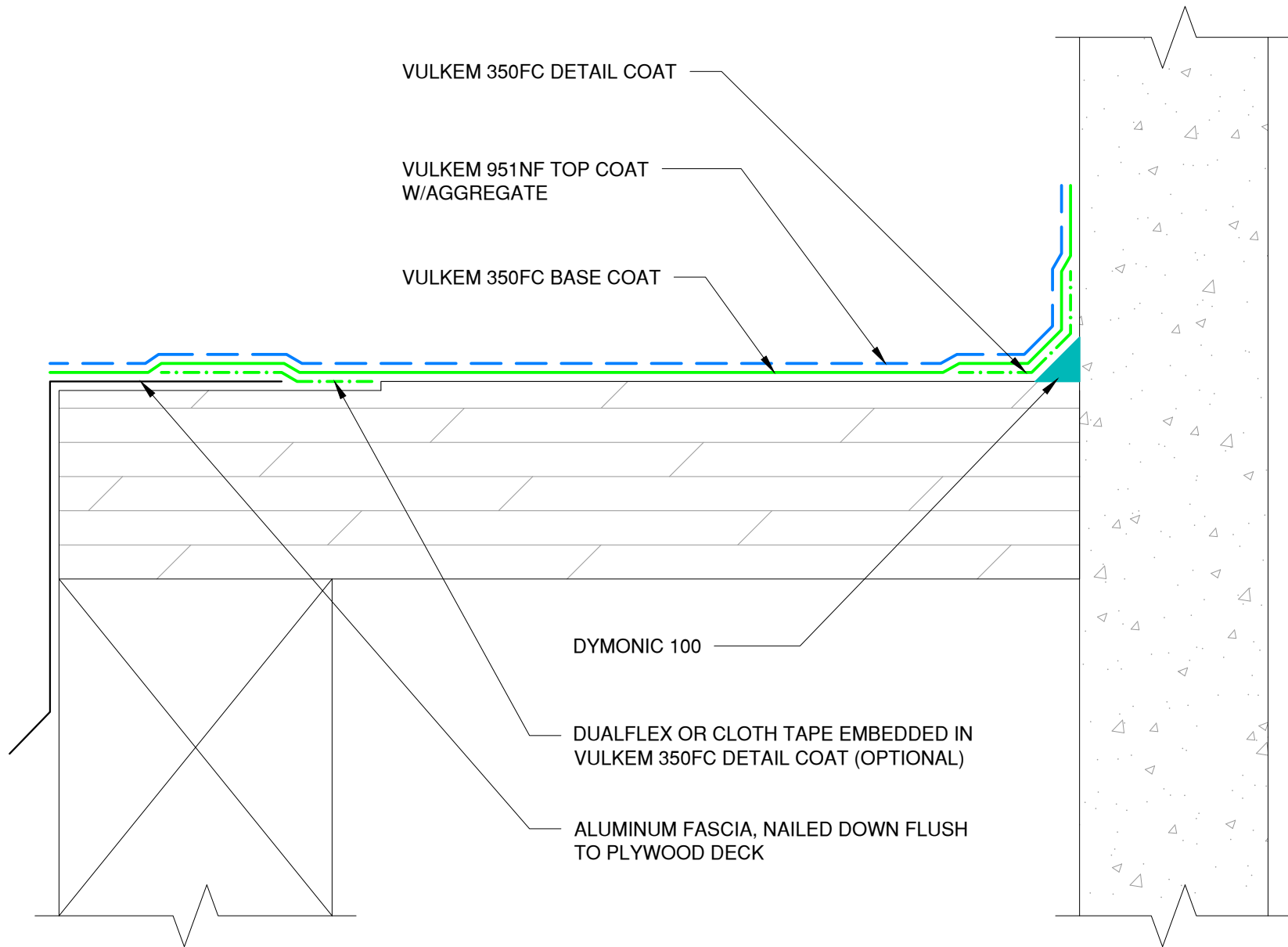
File Name:

350FC-P-G-03



Construction Products Group

www.tremcocpg.com



NOTE: VULKEM 950NF MAY BE USED AS A TOPCOAT IN AREAS WITH NO U.V.

The architecture, engineering, and design of the project using the Tremco products are the responsibility of the project's design professional. All products and systems must comply with local building codes and standards. This detail is for general information and guidance only and Tremco specifically disclaims any liability for the use of this detail. The project design professional determines, in its sole discretion, whether this detail or a functionally equivalent detail is best suited for the project. This detail is subject to change without notice. Contact Tremco to ensure you have the most recent version.

Vulkem 350FC Pedestrian Coating



Tremco Technical Support: 866-209-2404

Detail: Typical Vulkem 350FC Pedestrian System Edge Detail on Plywood

Drawn by: KAB

Checked by: EL

Scale: NTS

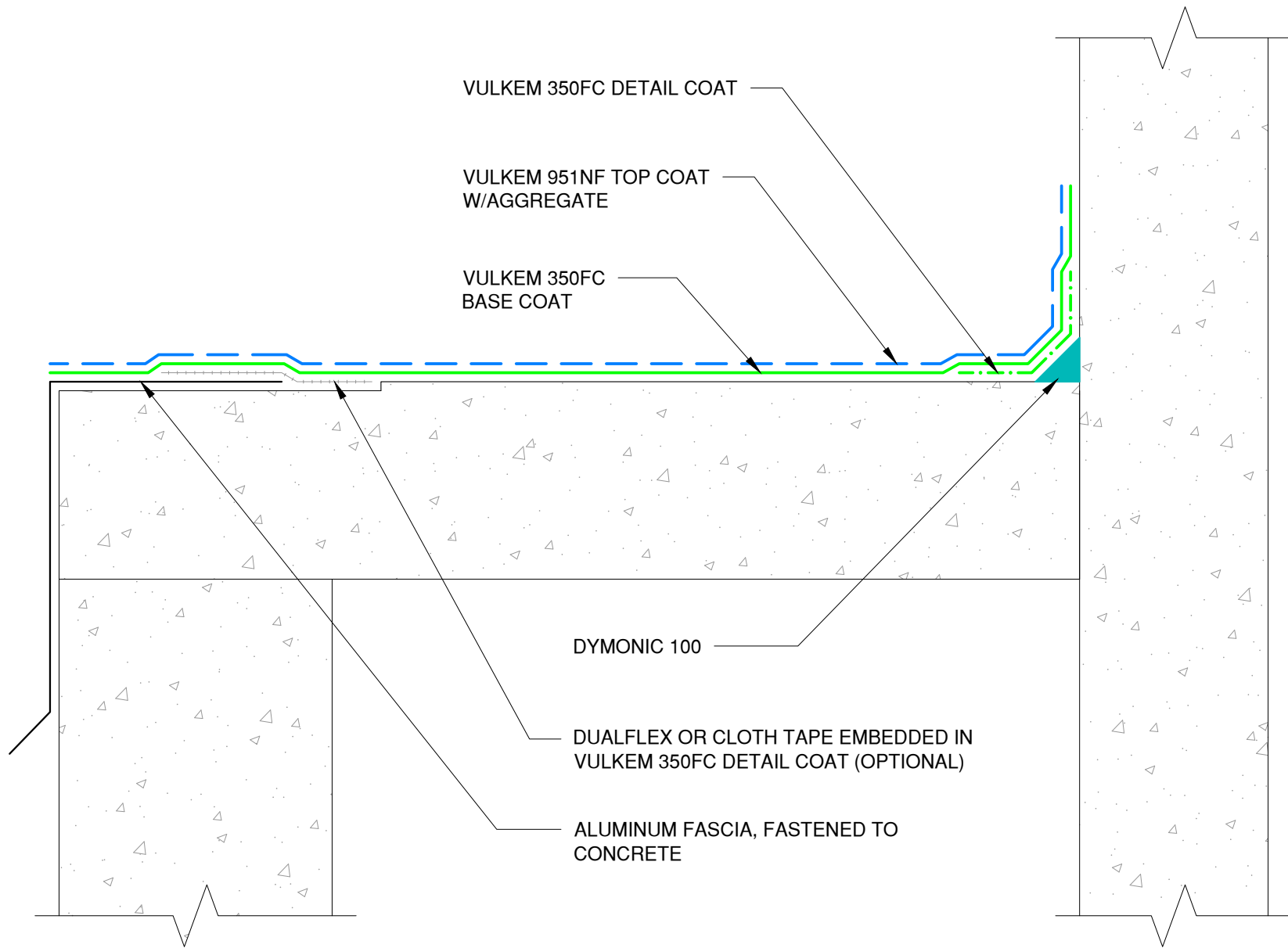
Date: 1/17/2023

File Name:

350FC-P-G-04



www.tremcocpg.com



NOTE: VULKEM 950NF MAY BE USED AS A TOPCOAT IN AREAS WITH NO U.V.

The architecture, engineering, and design of the project using the Tremco products are the responsibility of the project's design professional. All products and systems must comply with local building codes and standards. This detail is for general information and guidance only and Tremco specifically disclaims any liability for the use of this detail. The project design professional determines, in its sole discretion, whether this detail or a functionally equivalent detail is best suited for the project. This detail is subject to change without notice. Contact Tremco to ensure you have the most recent version.

Vulkem 350FC Pedestrian Coating



Tremco Technical Support: 866-209-2404

Detail: Typical Vulkem 350FC Pedestrian System Edge Detail on Concrete

Drawn by: KAB

Checked by: EL

Scale: NTS

Date: 1/17/2023

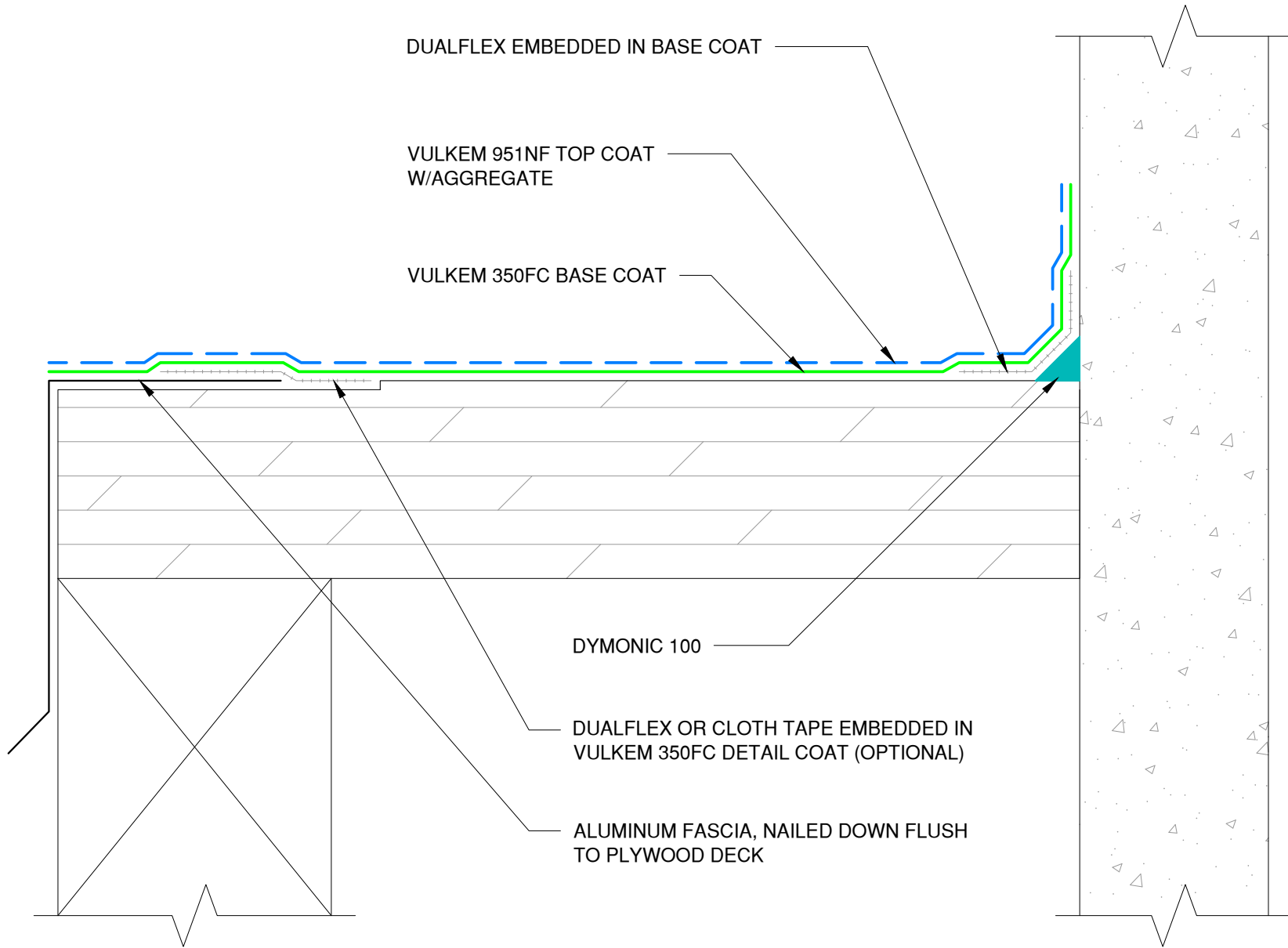
File Name:

350FC-P-G-05



Construction Products Group

www.tremcocpg.com



NOTE: VULKEM 950NF MAY BE USED AS A TOPCOAT IN AREAS WITH NO U.V.

The architecture, engineering, and design of the project using the Tremco products are the responsibility of the project's design professional. All products and systems must comply with local building codes and standards. This detail is for general information and guidance only and Tremco specifically disclaims any liability for the use of this detail. The project design professional determines, in its sole discretion, whether this detail or a functionally equivalent detail is best suited for the project. This detail is subject to change without notice. Contact Tremco to ensure you have the most recent version.

Vulkem 350FC Pedestrian Coating



Tremco Technical Support: 866-209-2404

Detail: Typical Vulkem 350FC Pedestrian System Edge Detail on Plywood with Dualflex

Drawn by: KAB

Checked by: EL

Scale: NTS

Date: 1/17/2023

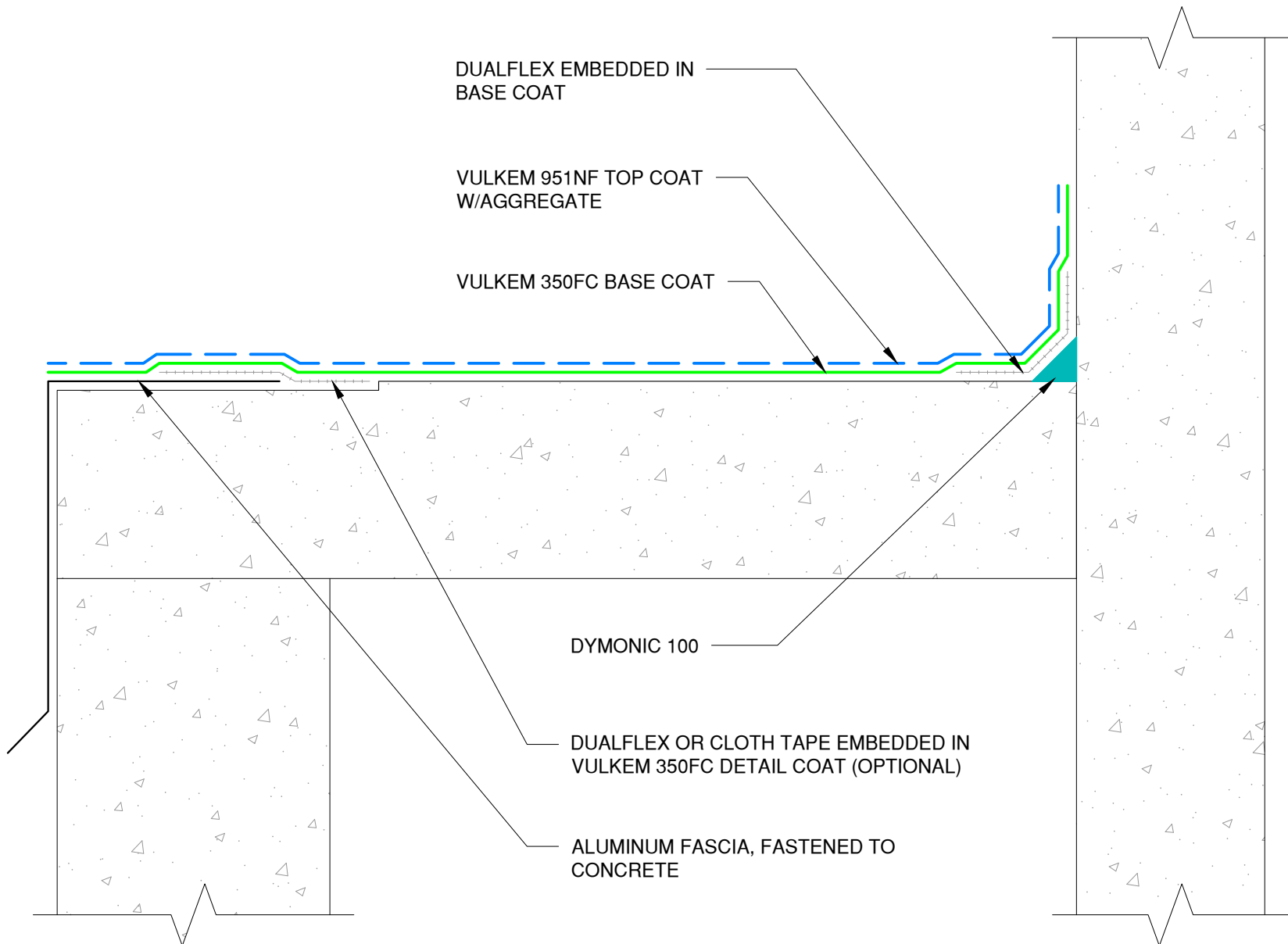
File Name:

350FC-P-G-06



Construction Products Group

www.tremcocpg.com



NOTE: VULKEM 950NF MAY BE USED AS A TOPCOAT IN AREAS WITH NO U.V.

The architecture, engineering, and design of the project using the Tremco products are the responsibility of the project's design professional. All products and systems must comply with local building codes and standards. This detail is for general information and guidance only and Tremco specifically disclaims any liability for the use of this detail. The project design professional determines, in its sole discretion, whether this detail or a functionally equivalent detail is best suited for the project. This detail is subject to change without notice. Contact Tremco to ensure you have the most recent version.

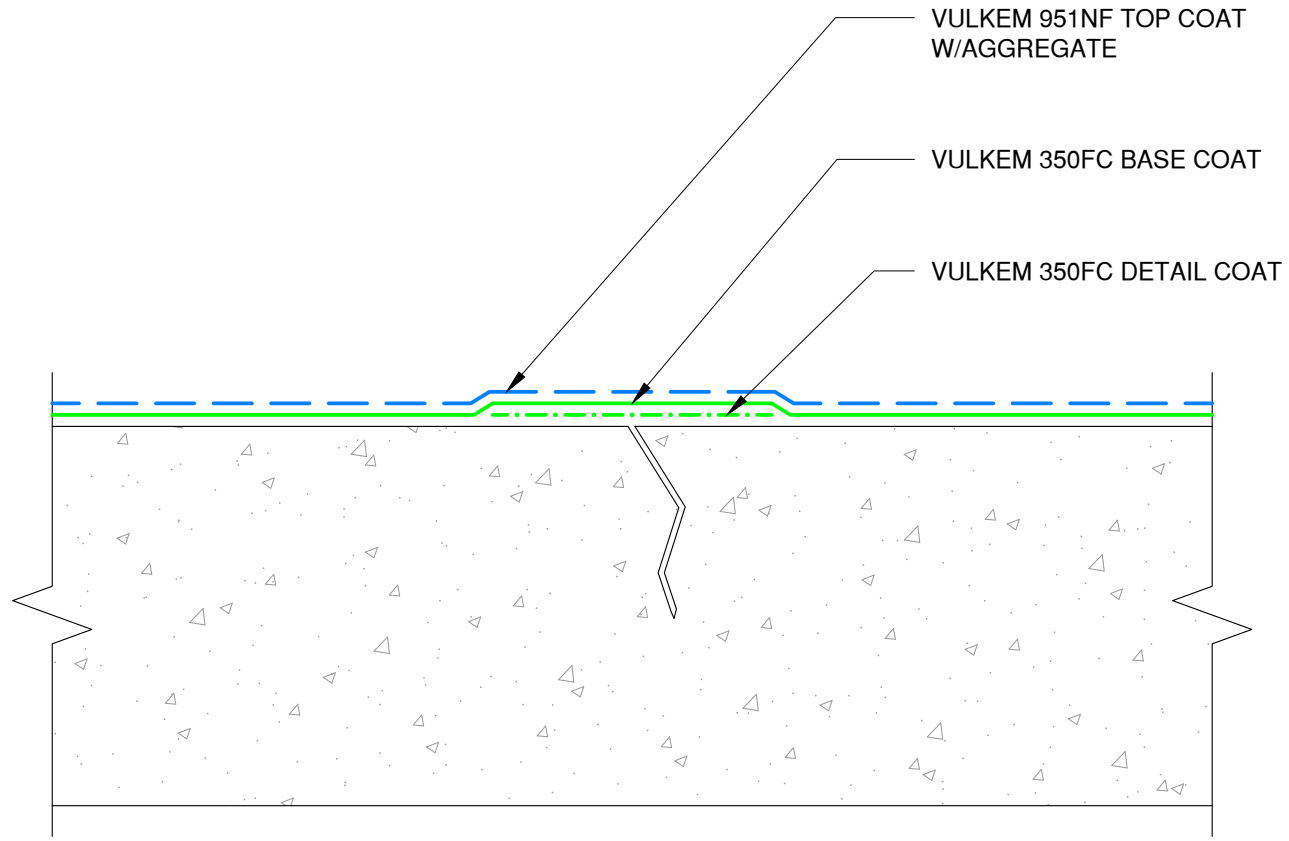
Vulkem 350FC Pedestrian Coating



Detail: Typical Vulkem 350FC Pedestrian System Edge Detail on Concrete			
Drawn by: KAB	Checked by: EL	Scale: NTS	Date: 1/17/2023
www.tremcocpg.com			

File Name:
350FC-P-G-07





VULKEM 951NF TOP COAT
W/AGGREGATE

VULKEM 350FC BASE COAT

VULKEM 350FC DETAIL COAT

NOTE: VULKEM 950NF MAY BE USED AS A
TOPCOAT IN AREAS WITH NO U.V.

The architecture, engineering, and design of the project using the Tremco products are the responsibility of the project's design professional. All products and systems must comply with local building codes and standards. This detail is for general information and guidance only and Tremco specifically disclaims any liability for the use of this detail. The project design professional determines, in its sole discretion, whether this detail or a functionally equivalent detail is best suited for the project. This detail is subject to change without notice. Contact Tremco to ensure you have the most recent version.

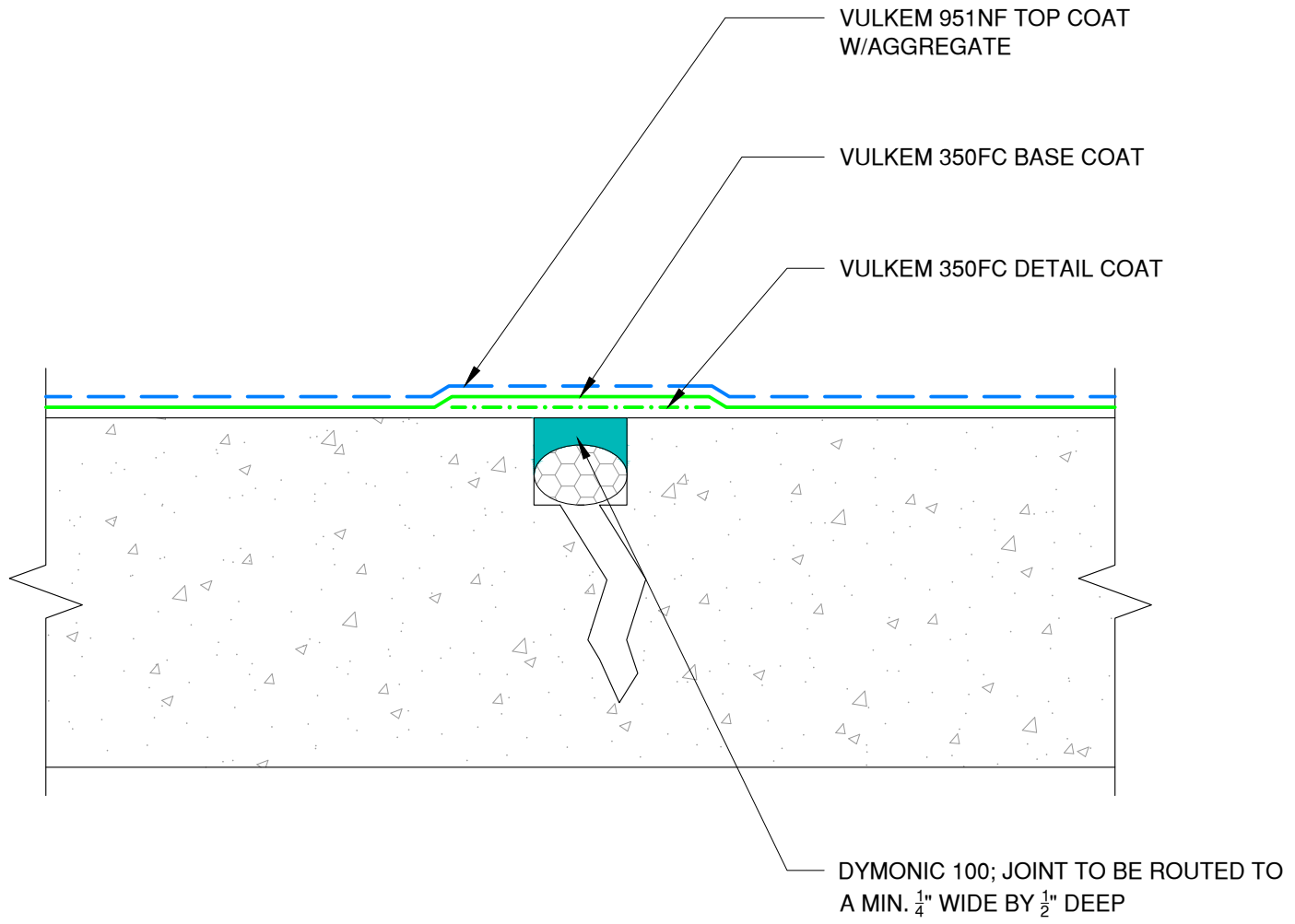
Vulkem 350FC Pedestrian Coating



Detail: Treatment of Cracks Less than 1/16" in Vulkem 350FC Pedestrian System			
Drawn by: KAB	Checked by: EL	Scale: NTS	Date: 1/17/2023
www.tremcocpg.com			

File Name:
350FC-P-G-08





NOTE: VULKEM 950NF MAY BE USED AS A TOPCOAT IN AREAS WITH NO U.V.

The architecture, engineering, and design of the project using the Tremco products are the responsibility of the project's design professional. All products and systems must comply with local building codes and standards. This detail is for general information and guidance only and Tremco specifically disclaims any liability for the use of this detail. The project design professional determines, in its sole discretion, whether this detail or a functionally equivalent detail is best suited for the project. This detail is subject to change without notice. Contact Tremco to ensure you have the most recent version.

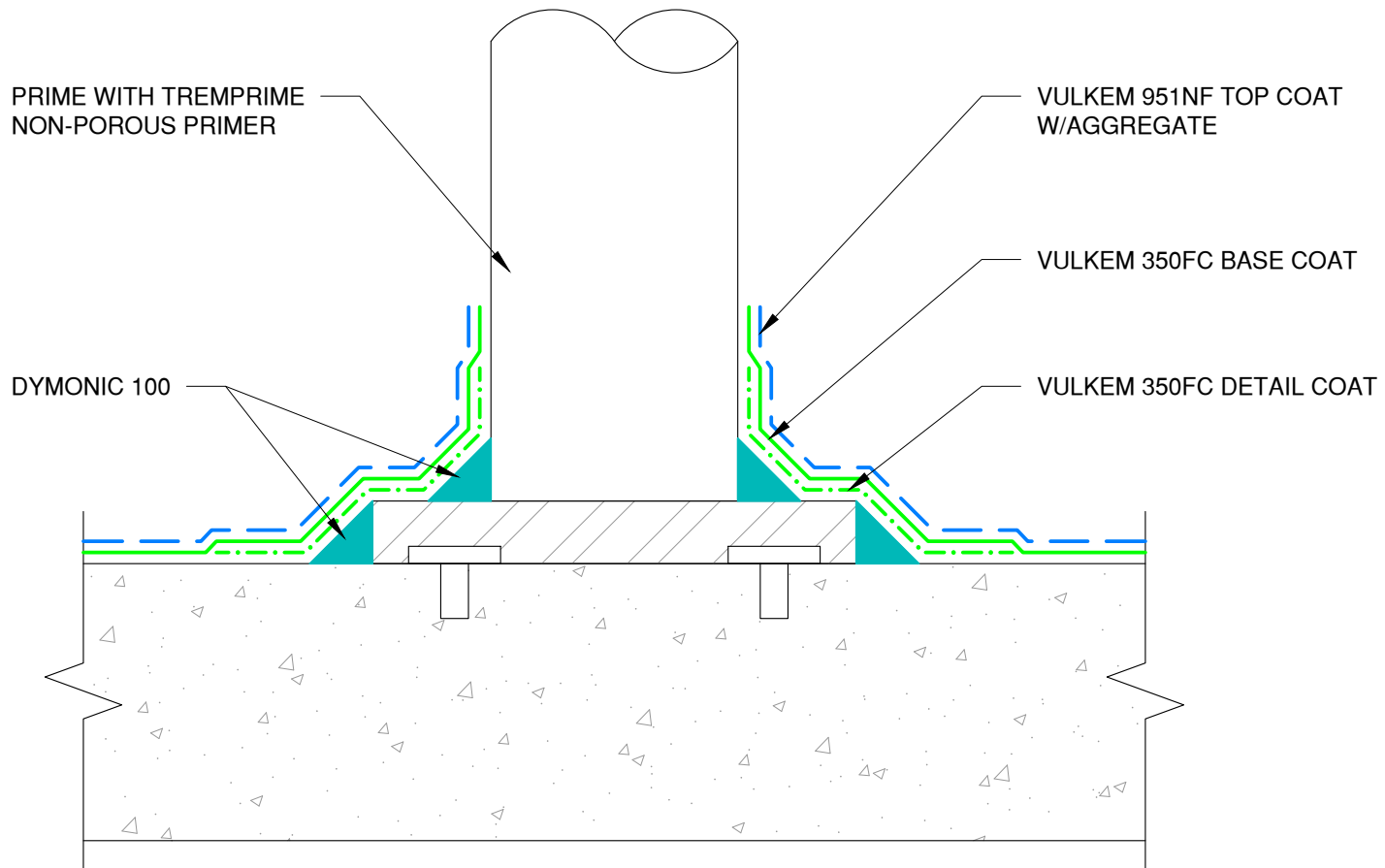
Vulkem 350FC Pedestrian Coating



Detail: Treatment of Cracks Greater than 1/16" in Vulkem 350FC Pedestrian System			
Drawn by: KAB	Checked by: EL	Scale: NTS	Date: 1/17/2023
www.tremcocpg.com			

File Name:
350FC-P-G-09





NOTE: VULKEM 950NF MAY BE USED AS A TOPCOAT IN AREAS WITH NO U.V.

The architecture, engineering, and design of the project using the Tremco products are the responsibility of the project's design professional. All products and systems must comply with local building codes and standards. This detail is for general information and guidance only and Tremco specifically disclaims any liability for the use of this detail. The project design professional determines, in its sole discretion, whether this detail or a functionally equivalent detail is best suited for the project. This detail is subject to change without notice. Contact Tremco to ensure you have the most recent version.

Vulkem 350FC Pedestrian Coating



Tremco Technical Support: 866-209-2404

Detail: Treatment of Metal Posts in Vulkem 350FC Pedestrian System

Drawn by: KAB

Checked by: EL

Scale: NTS

Date: 1/17/2023

File Name:

350FC-P-P-01



Construction Products Group

www.tremcocpg.com

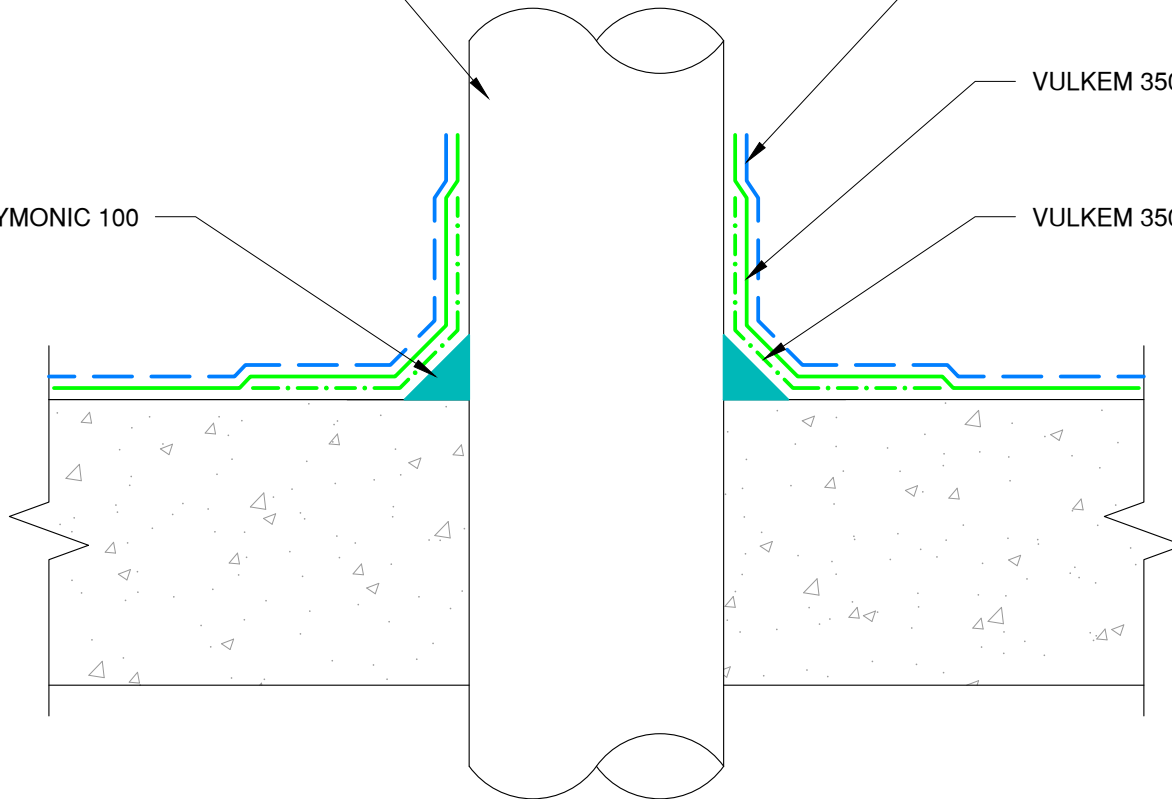
PRIME WITH TREMPRIME
NON-POROUS PRIMER

DYMONIC 100

VULKEM 951NF TOP COAT
W/AGGREGATE

VULKEM 350FC BASE COAT

VULKEM 350FC DETAIL COAT



NOTE: VULKEM 950NF MAY BE USED AS A
TOPCOAT IN AREAS WITH NO U.V.

The architecture, engineering, and design of the project using the Tremco products are the responsibility of the project's design professional. All products and systems must comply with local building codes and standards. This detail is for general information and guidance only and Tremco specifically disclaims any liability for the use of this detail. The project design professional determines, in its sole discretion, whether this detail or a functionally equivalent detail is best suited for the project. This detail is subject to change without notice. Contact Tremco to ensure you have the most recent version.

Vulkem 350FC Pedestrian Coating



Tremco Technical Support: 866-209-2404

Detail: Treatment of Metal Penetration in Vulkem 350FC Pedestrian System

Drawn by: KAB

Checked by: EL

Scale: NTS

Date: 1/17/2023

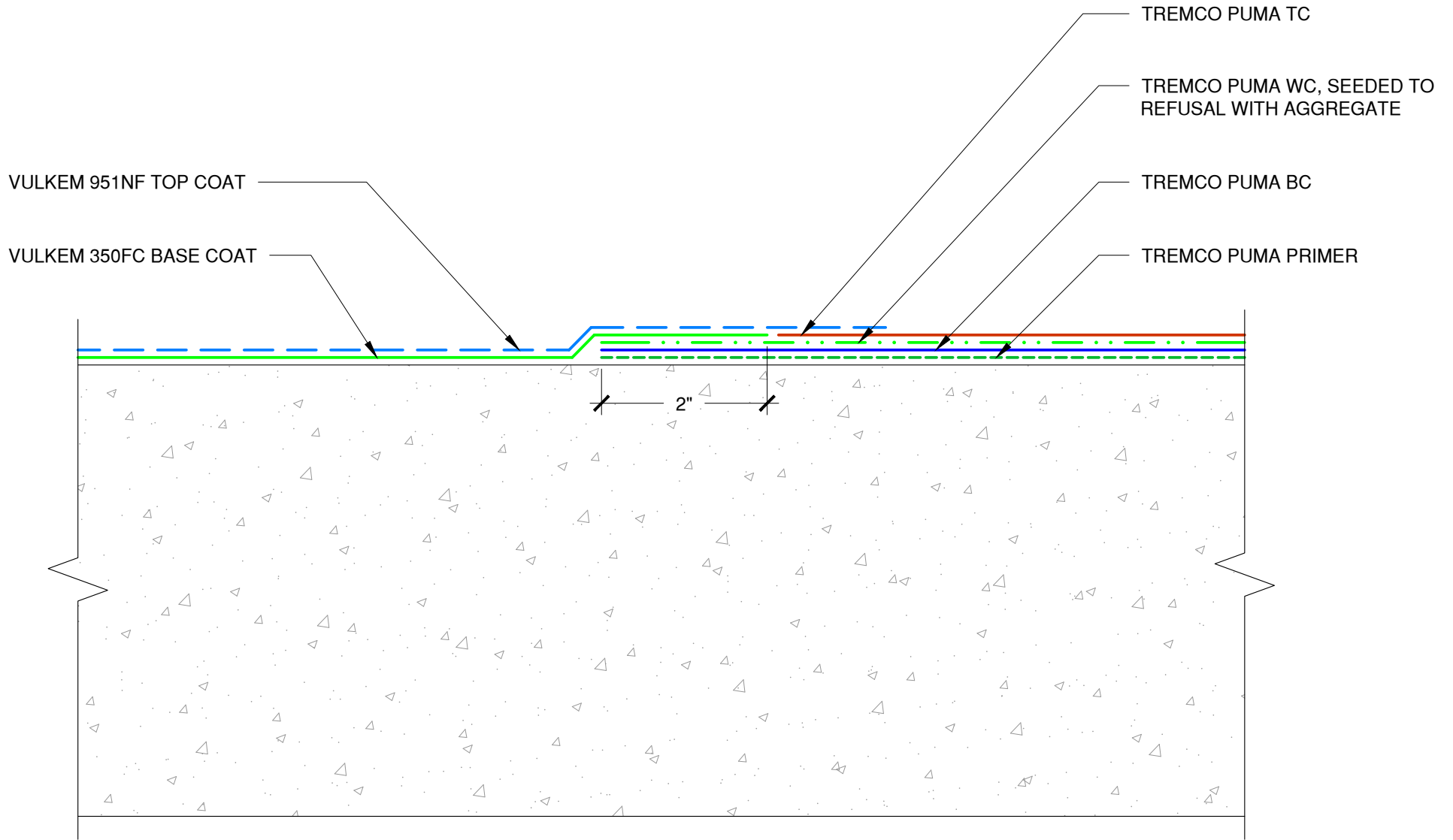
File Name:

350FC-P-P-02



Construction Products Group

www.tremcocpg.com



NOTE: VULKEM 950NF MAY BE USED AS TOPCOAT IN AREAS WITH NO U.V.

The architecture, engineering, and design of the project using the Tremco products are the responsibility of the project's design professional. All products and systems must comply with local building codes and standards. This detail is for general information and guidance only and Tremco specifically disclaims any liability for the use of this detail. The project design professional determines, in its sole discretion, whether this detail or a functionally equivalent detail is best suited for the project. This detail is subject to change without notice. Contact Tremco to ensure you have the most recent version.

Vulkem 350FC Pedestrian Coating



Tremco Technical Support: 866-209-2404

Detail: Vulkem 350FC Pedestrian System to Vulkem EWS System

Drawn by: KAB

Checked by: EL

Scale: NTS

Date: 1/18/2023

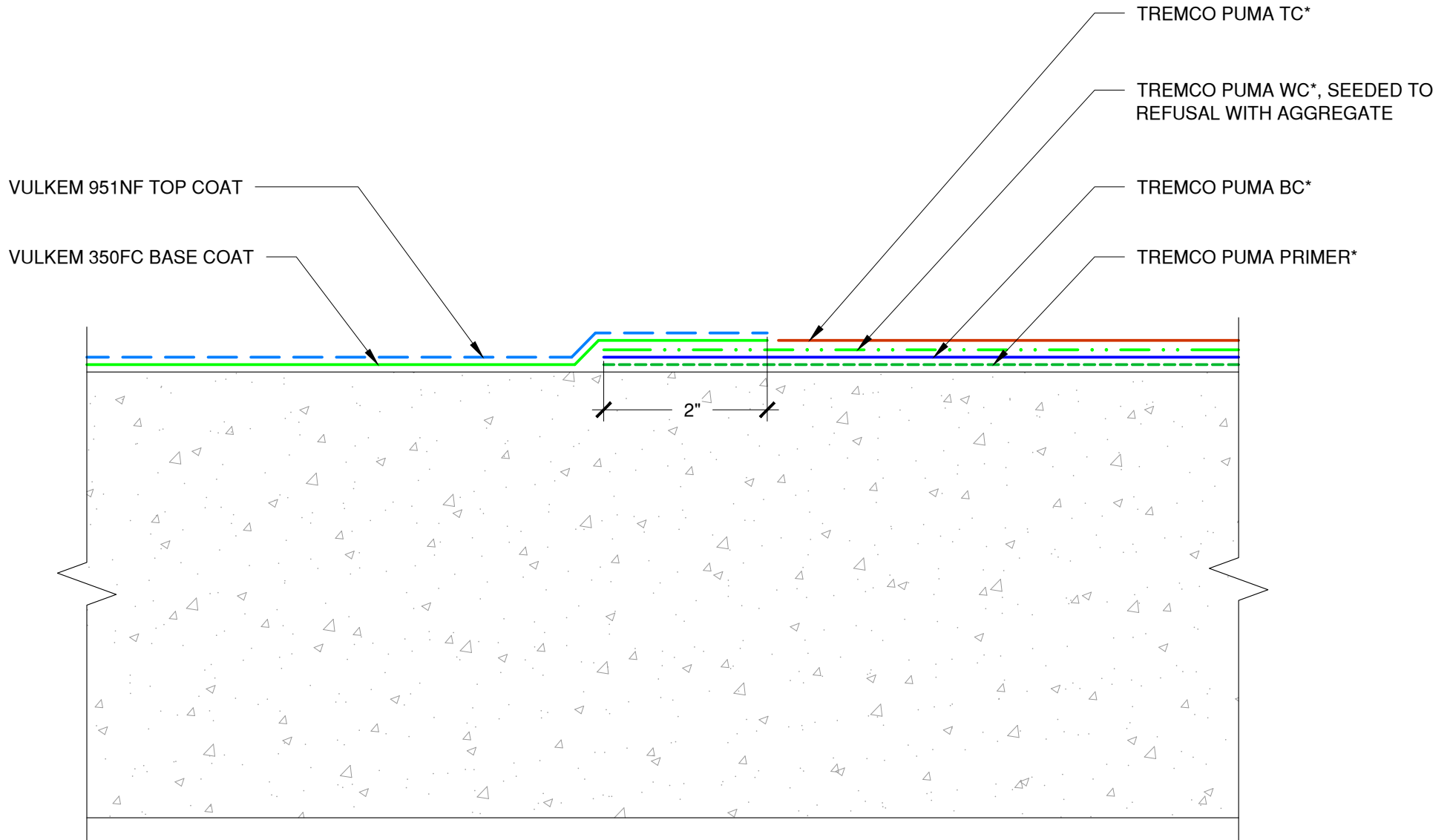
File Name:

350FC-P-T-01



Construction Products Group

www.tremcocpg.com



NOTE: VULKEM 950NF MAY BE USED AS TOPCOAT IN AREAS WITH NO U.V.

The architecture, engineering, and design of the project using the Tremco products are the responsibility of the project's design professional. All products and systems must comply with local building codes and standards. This detail is for general information and guidance only and Tremco specifically disclaims any liability for the use of this detail. The project design professional determines, in its sole discretion, whether this detail or a functionally equivalent detail is best suited for the project. This detail is subject to change without notice. Contact Tremco to ensure you have the most recent version.

Vulkem 350FC Pedestrian Coating



Tremco Technical Support: 866-209-2404

Detail: Vulkem 350FC Pedestrian to Vulkem EWS System

Drawn by: KAB

Checked by: EL

Scale: NTS

Date: 1/18/2023

File Name:

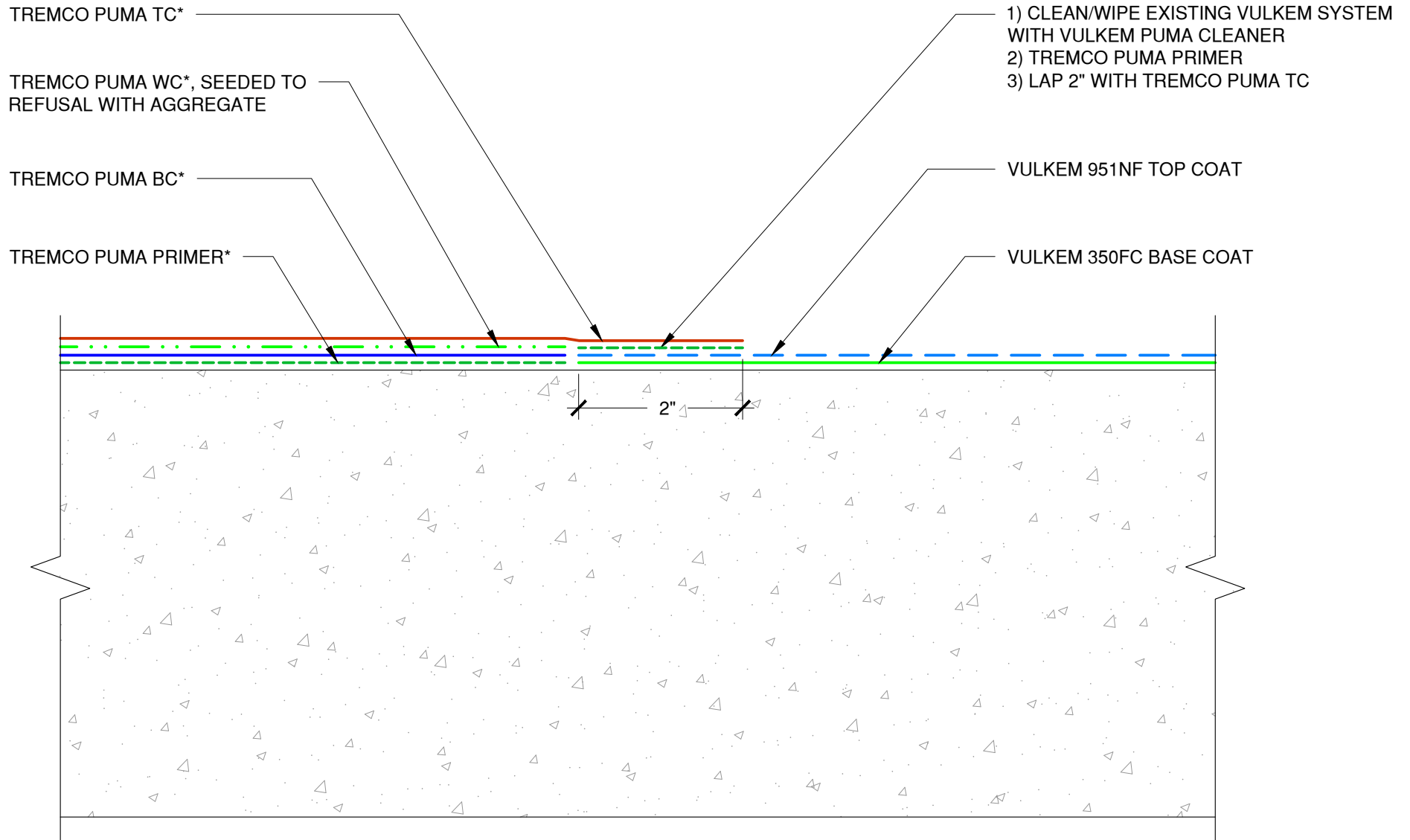
350FC-P-T-02



Construction Products Group

www.tremcocpg.com

NOTE: VULKEM 950NF MAY BE USED AS TOPCOAT IN AREAS WITH NO U.V.



The architecture, engineering, and design of the project using the Tremco products are the responsibility of the project's design professional. All products and systems must comply with local building codes and standards. This detail is for general information and guidance only and Tremco specifically disclaims any liability for the use of this detail. The project design professional determines, in its sole discretion, whether this detail or a functionally equivalent detail is best suited for the project. This detail is subject to change without notice. Contact Tremco to ensure you have the most recent version.

*A COMPONENT OF THE VULKEM® EWS TRAFFIC COATING SYSTEM WITH PUMA (POLYURETHANE METHACRYLATE)

Vulkem 350FC Pedestrian Coating



Tremco Technical Support: 866-209-2404

Detail: Vulkem EWS System to Vulkem 350FC Pedestrian System

Drawn by: KAB

Checked by: EL

Scale: NTS

Date: 1/18/2023

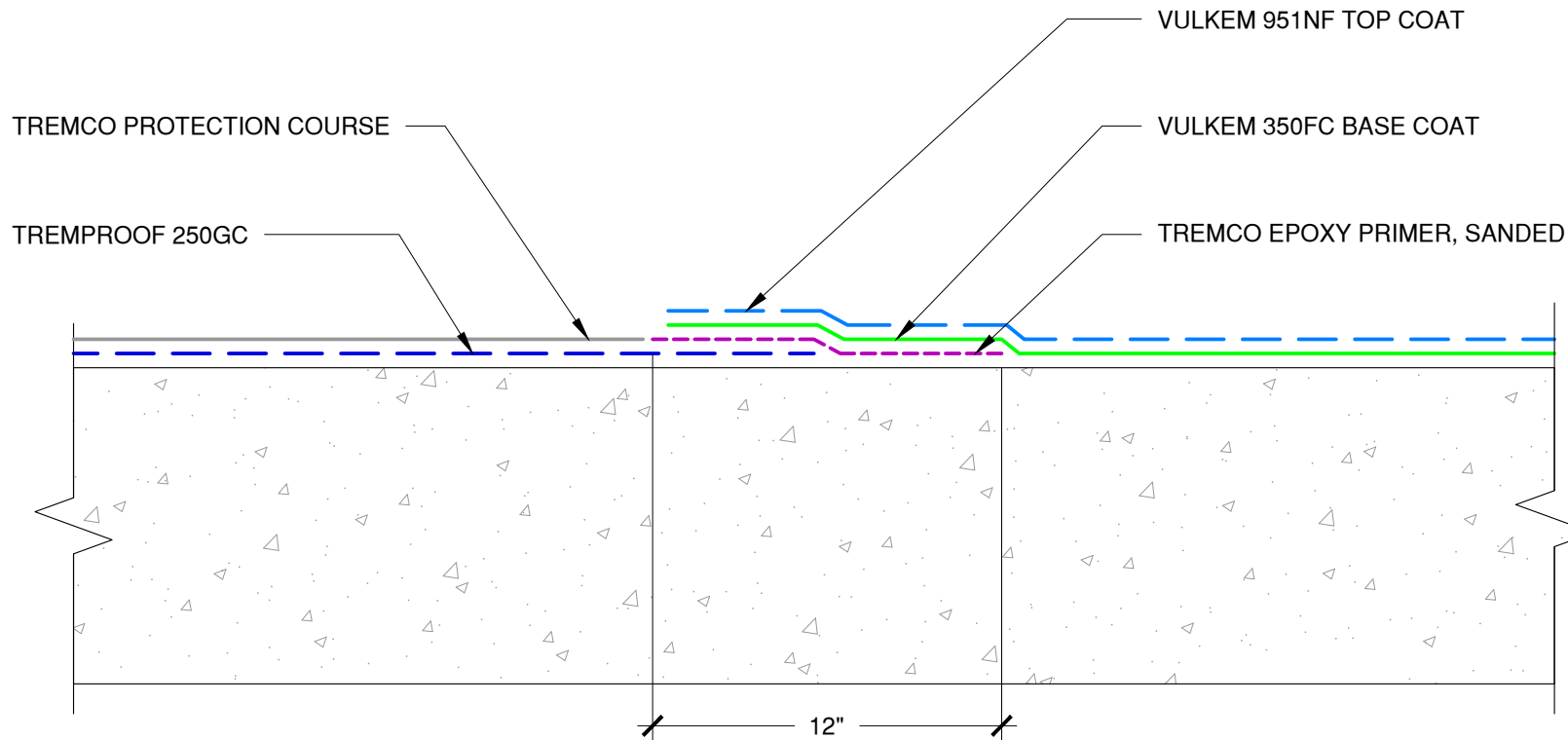
File Name:

350FC-P-T-03



Construction Products Group

www.tremcocpg.com



NOTE: VULKEM 950NF MAY BE USED AS TOPCOAT IN AREAS WITH NO U.V.

The architecture, engineering, and design of the project using the Tremco products are the responsibility of the project's design professional. All products and systems must comply with local building codes and standards. This detail is for general information and guidance only and Tremco specifically disclaims any liability for the use of this detail. The project design professional determines, in its sole discretion, whether this detail or a functionally equivalent detail is best suited for the project. This detail is subject to change without notice. Contact Tremco to ensure you have the most recent version.

Vulkem 350FC Pedestrian Coating



Tremco Technical Support: 866-209-2404

Detail: Vulkem 350FC Pedestrian System to TREMProof 250GC

Drawn by: KAB

Checked by: EL

Scale: NTS

Date: 1/18/2023

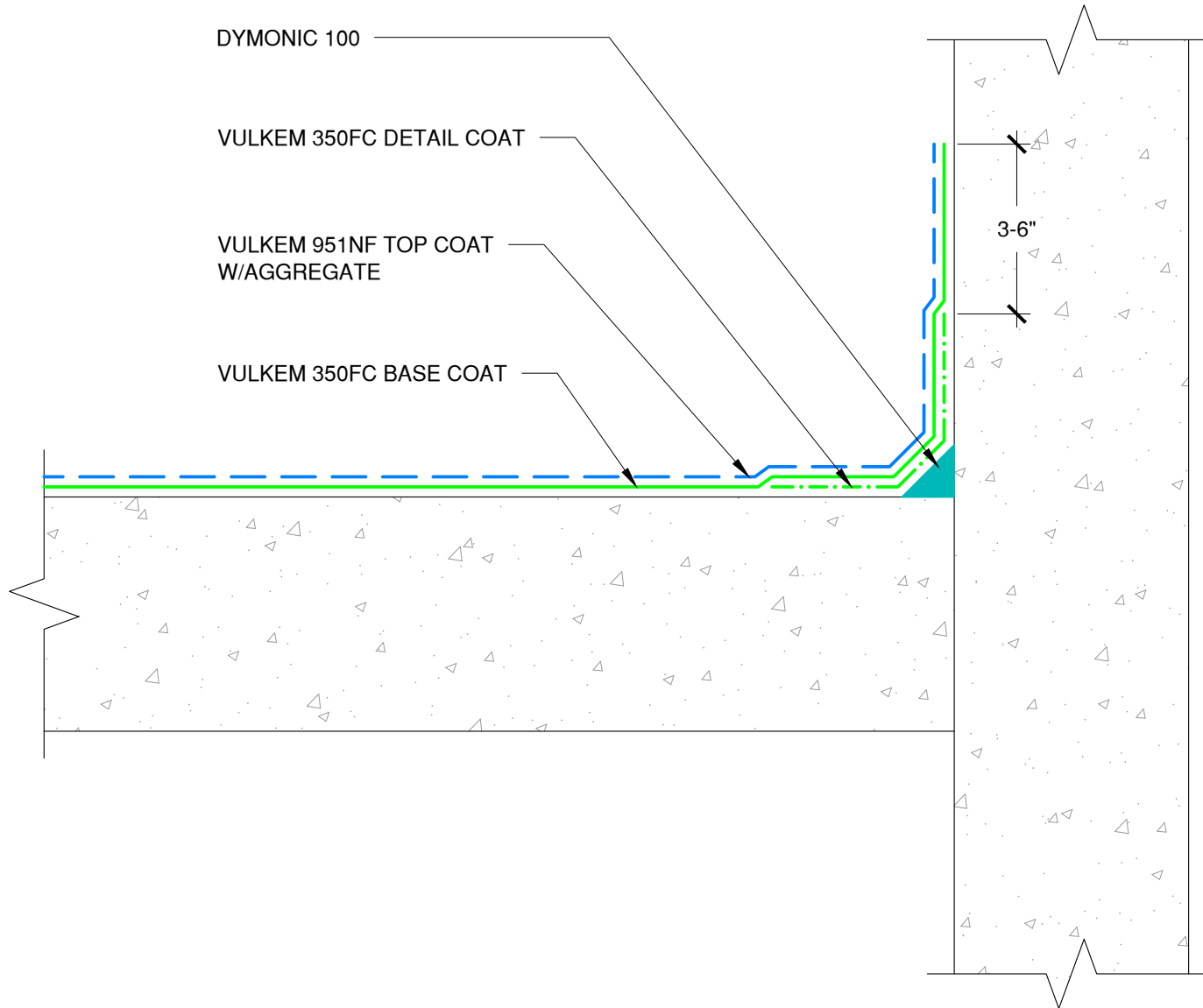
File Name:

350FC-P-T-04



Construction Products Group

www.tremcocpg.com



NOTE: VULKEM 950NF MAY BE USED AS A TOPCOAT IN AREAS WITH NO U.V.

The architecture, engineering, and design of the project using the Tremco products are the responsibility of the project's design professional. All products and systems must comply with local building codes and standards. This detail is for general information and guidance only and Tremco specifically disclaims any liability for the use of this detail. The project design professional determines, in its sole discretion, whether this detail or a functionally equivalent detail is best suited for the project. This detail is subject to change without notice. Contact Tremco to ensure you have the most recent version.

Vulkem 350FC Pedestrian Coating



Tremco Technical Support: 866-209-2404

Detail: Vulkem 350FC Pedestrian System at Upturn

Drawn by: KAB

Checked by: EL

Scale: NTS

Date: 1/18/2023

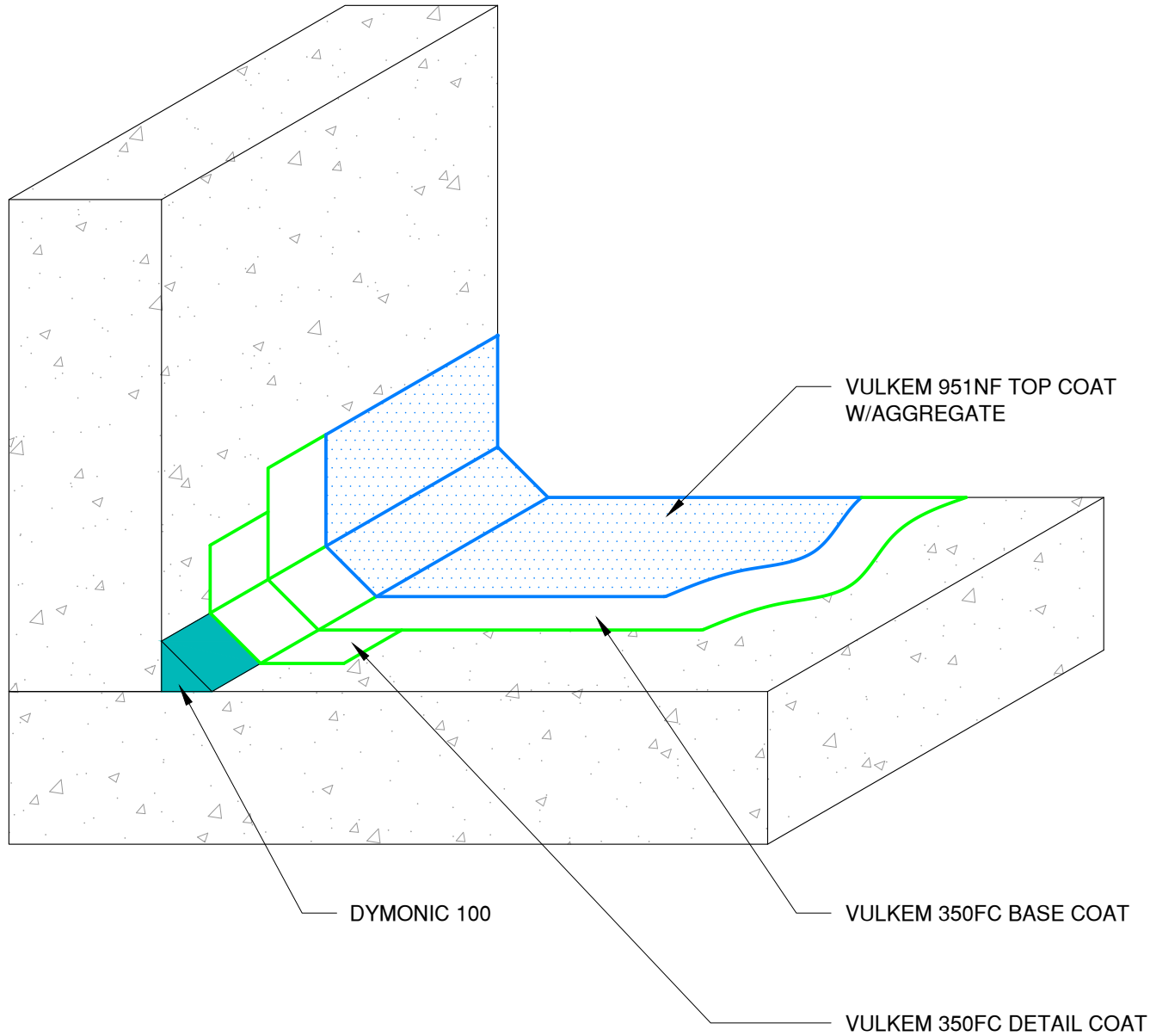
File Name:

350FC-P-U-01



Construction Products Group

www.tremcocpg.com



NOTE: VULKEM 950NF MAY BE USED AS A TOPCOAT IN AREAS WITH NO U.V.

The architecture, engineering, and design of the project using the Tremco products are the responsibility of the project's design professional. All products and systems must comply with local building codes and standards. This detail is for general information and guidance only and Tremco specifically disclaims any liability for the use of this detail. The project design professional determines, in its sole discretion, whether this detail or a functionally equivalent detail is best suited for the project. This detail is subject to change without notice. Contact Tremco to ensure you have the most recent version.

Vulkem 350FC Pedestrian Coating



Tremco Technical Support: 866-209-2404

Detail: Typical Vulkem 350FC Pedestrian System at Horizontal to Vertical Transition

Drawn by: KAB

Checked by: EL

Scale: NTS

Date: 1/17/2023

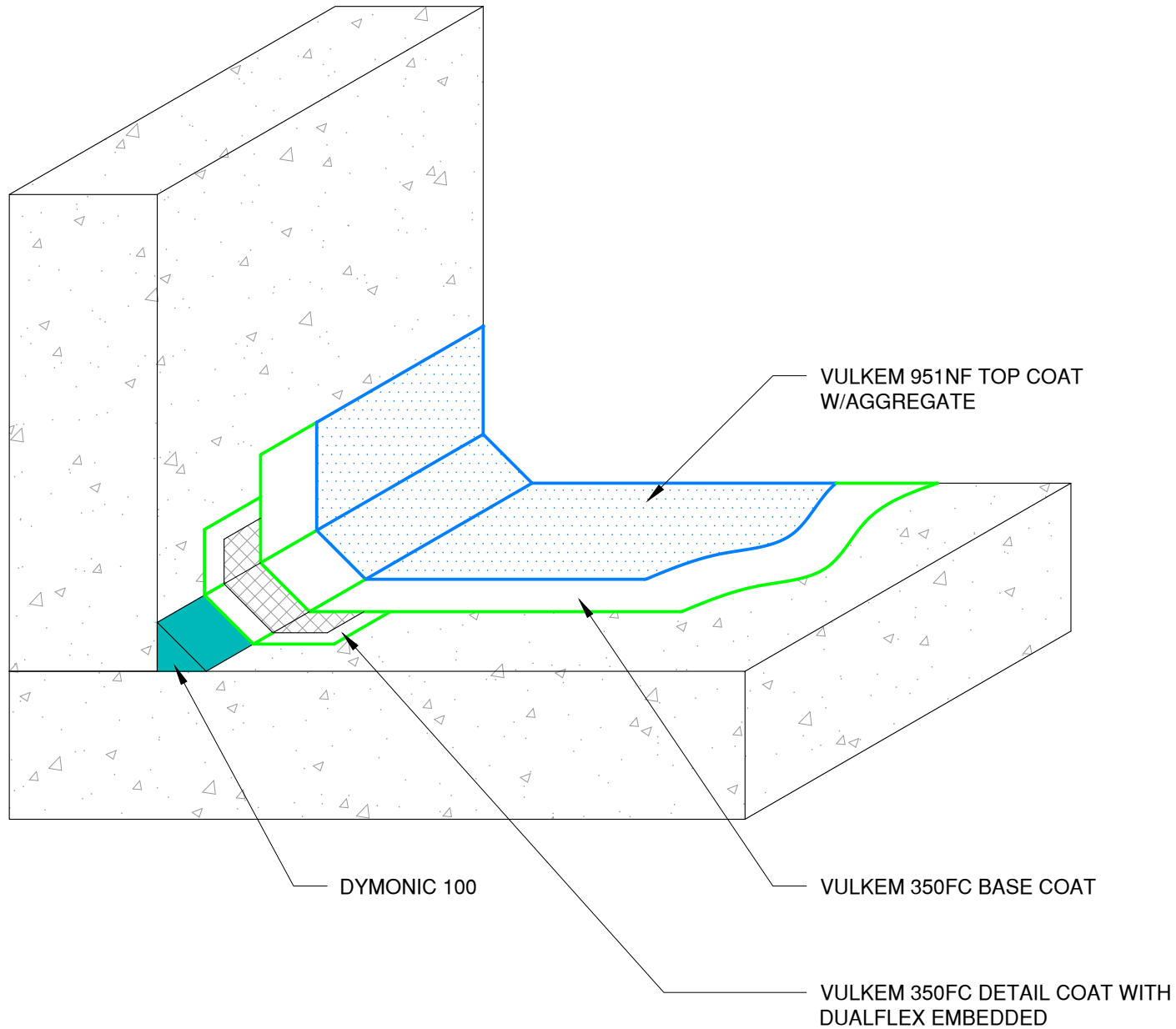
File Name:

350FC-P-U-02



Construction Products Group

www.tremcocpg.com



NOTE: VULKEM 950NF MAY BE USED AS A TOPCOAT IN AREAS WITH NO U.V.

The architecture, engineering, and design of the project using the Tremco products are the responsibility of the project's design professional. All products and systems must comply with local building codes and standards. This detail is for general information and guidance only and Tremco specifically disclaims any liability for the use of this detail. The project design professional determines, in its sole discretion, whether this detail or a functionally equivalent detail is best suited for the project. This detail is subject to change without notice. Contact Tremco to ensure you have the most recent version.

Vulkem 350FC Pedestrian Coating



Tremco Technical Support: 866-209-2404

Detail: Typical Vulkem 350FC Pedestrian System at Horizontal to Vertical Transition with Dualflex

Drawn by: KAB

Checked by: EL

Scale: NTS

Date: 1/17/2023

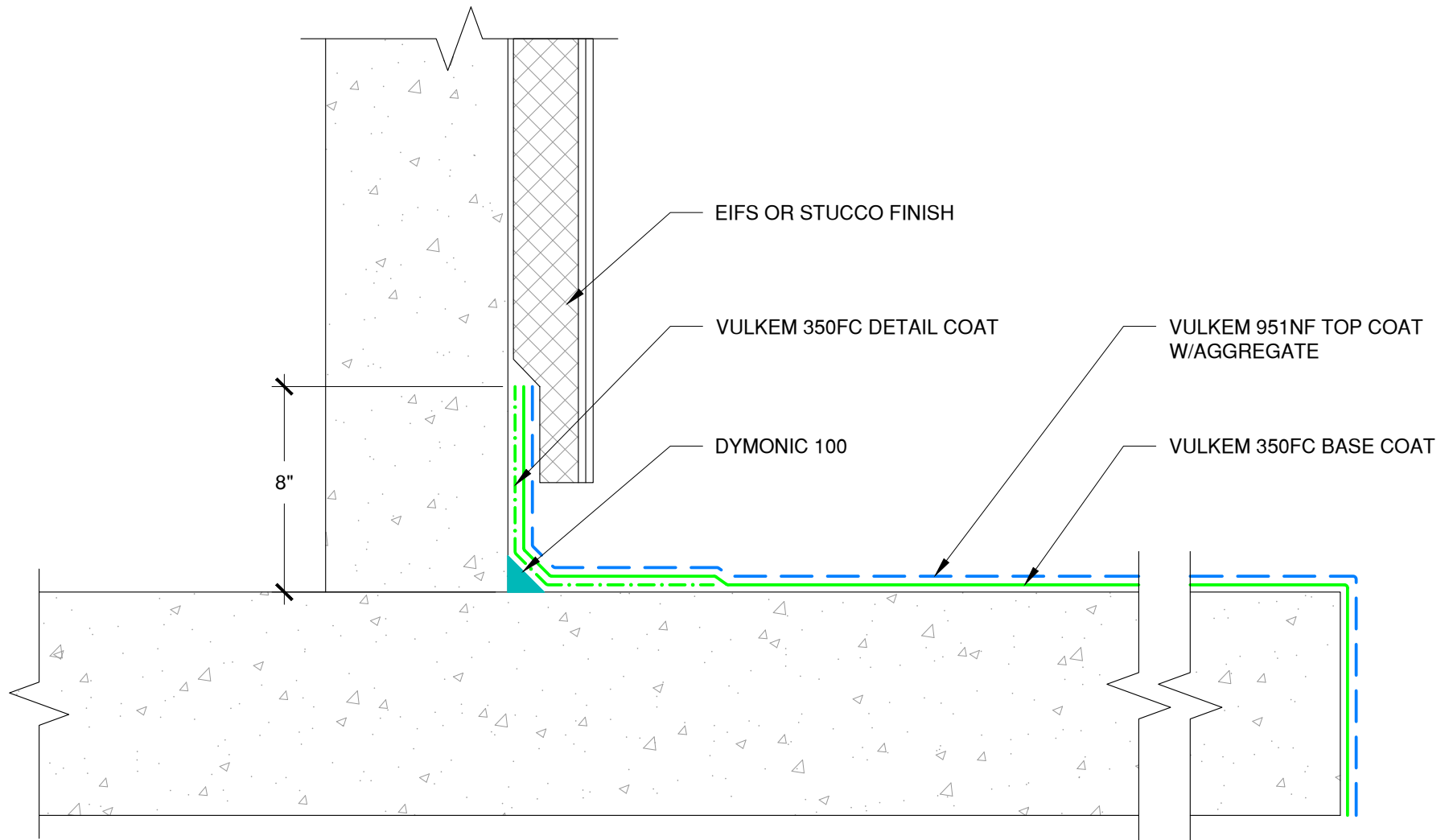
File Name:

350FC-P-U-03



Construction Products Group

www.tremcocpg.com



NOTE: VULKEM 950NF MAY BE USED AS A TOPCOAT IN AREAS WITH NO U.V.

The architecture, engineering, and design of the project using the Tremco products are the responsibility of the project's design professional. All products and systems must comply with local building codes and standards. This detail is for general information and guidance only and Tremco specifically disclaims any liability for the use of this detail. The project design professional determines, in its sole discretion, whether this detail or a functionally equivalent detail is best suited for the project. This detail is subject to change without notice. Contact Tremco to ensure you have the most recent version.

Vulkem 350FC Pedestrian Coating



Tremco Technical Support: 866-209-2404

Detail: Vulkem 350FC Pedestrian System at Upturn to Concrete Wall with Stucco or EIFS

Drawn by: KAB

Checked by: EL

Scale: NTS

Date: 1/17/2023

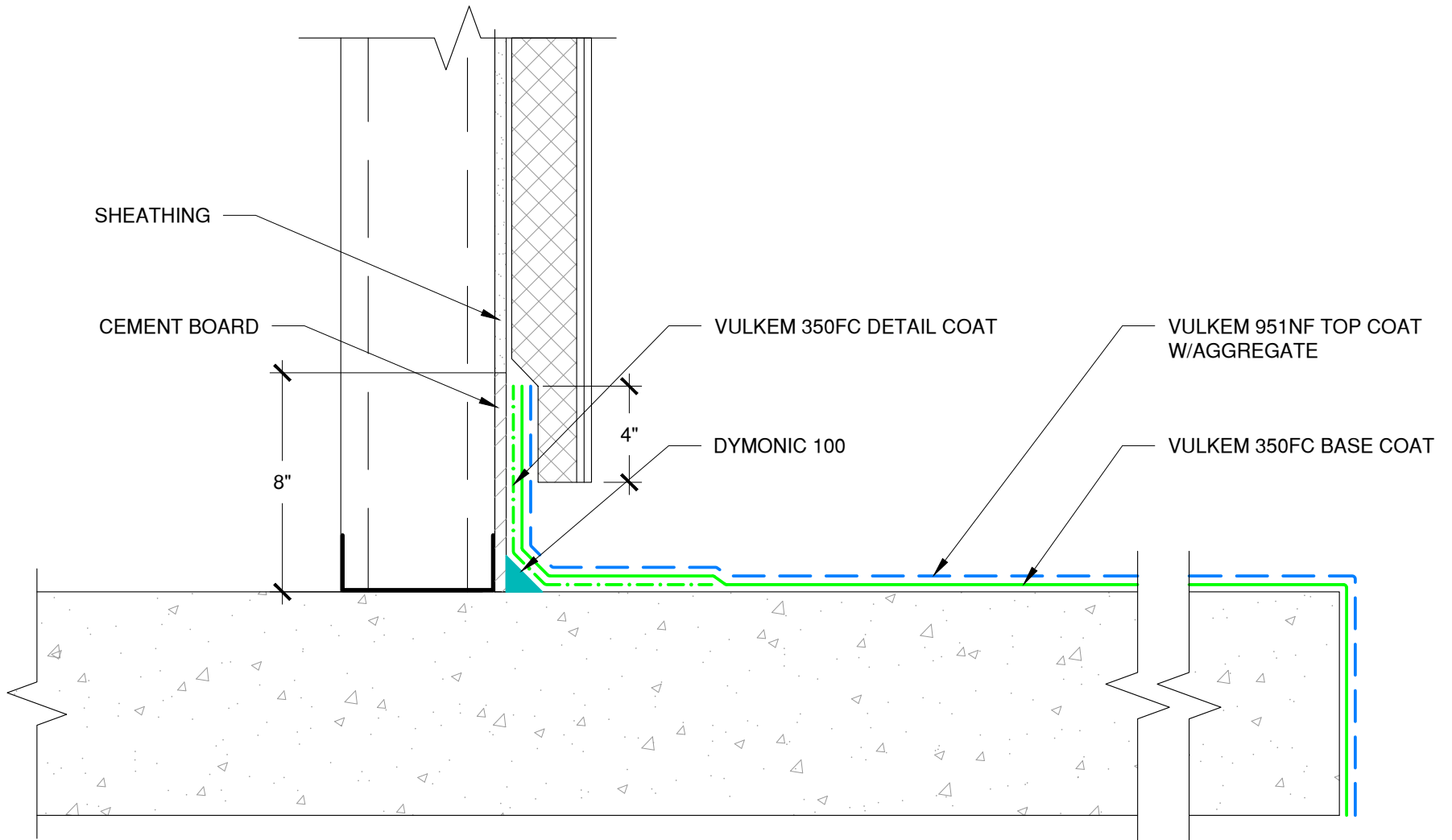
File Name:

350FC-P-U-04



Construction Products Group

www.tremcocpg.com



NOTE: VULKEM 950NF MAY BE USED AS A TOPCOAT IN AREAS WITH NO U.V.

The architecture, engineering, and design of the project using the Tremco products are the responsibility of the project's design professional. All products and systems must comply with local building codes and standards. This detail is for general information and guidance only and Tremco specifically disclaims any liability for the use of this detail. The project design professional determines, in its sole discretion, whether this detail or a functionally equivalent detail is best suited for the project. This detail is subject to change without notice. Contact Tremco to ensure you have the most recent version.

Vulkem 350FC Pedestrian Coating



Tremco Technical Support: 866-209-2404

Detail: Vulkem 350FC Pedestrian System at Upturn to Exterior Sheathing Wall

Drawn by: KAB

Checked by: EL

Scale: NTS

Date: 1/17/2023

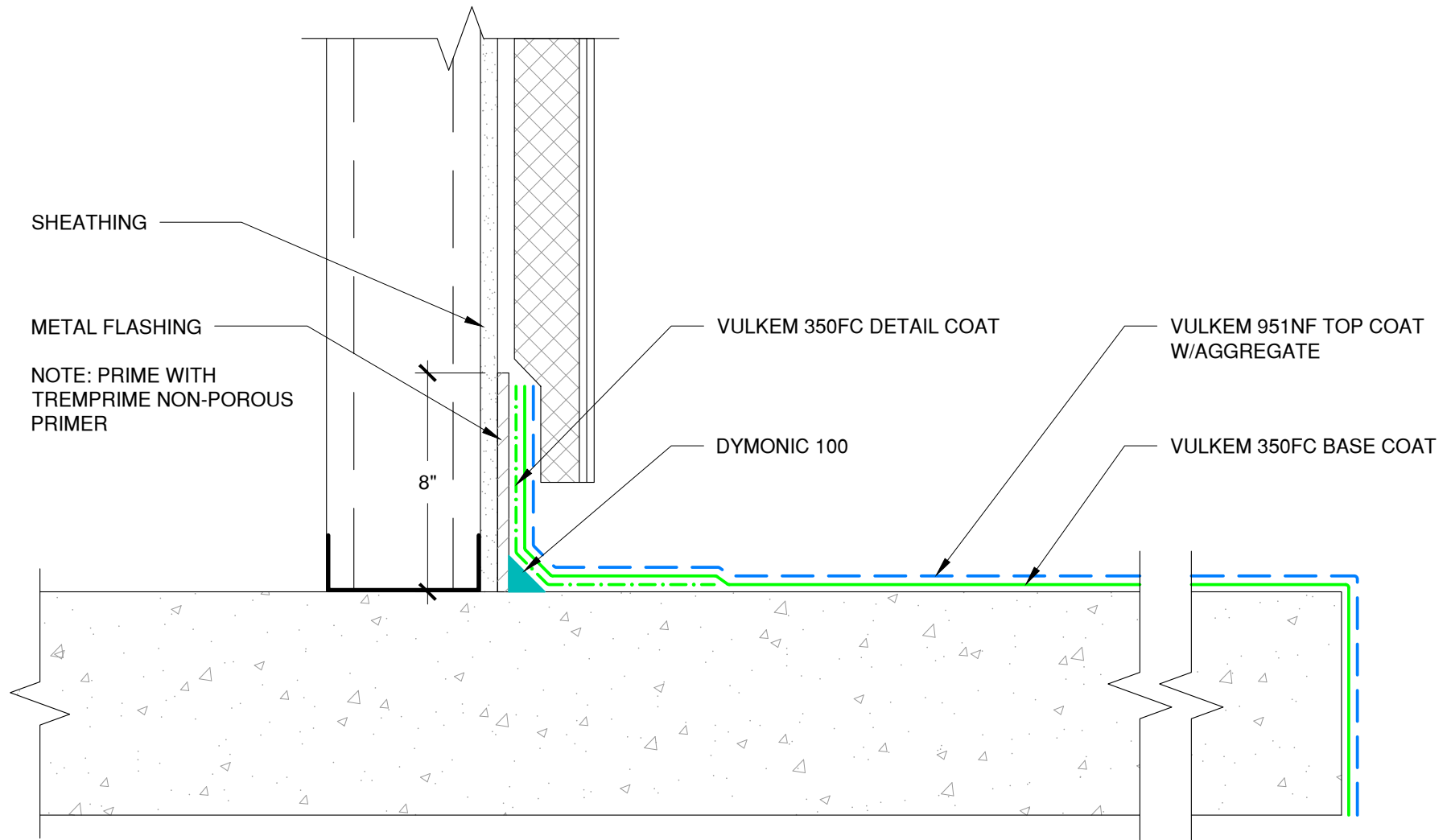
File Name:

350FC-P-U-05



Construction Products Group

www.tremcocpg.com



NOTE: VULKEM 950NF MAY BE USED AS A TOPCOAT IN AREAS WITH NO U.V.

The architecture, engineering, and design of the project using the Tremco products are the responsibility of the project's design professional. All products and systems must comply with local building codes and standards. This detail is for general information and guidance only and Tremco specifically disclaims any liability for the use of this detail. The project design professional determines, in its sole discretion, whether this detail or a functionally equivalent detail is best suited for the project. This detail is subject to change without notice. Contact Tremco to ensure you have the most recent version.

Vulkem 350FC Pedestrian Coating



Tremco Technical Support: 866-209-2404

Detail: Vulkem 350FC Pedestrian System Upturn to Exterior Sheathing Wall with Metal Flashing

Drawn by: KAB

Checked by: EL

Scale: NTS

Date: 1/27/2023

File Name:

350FC-P-U-06



Construction Products Group

www.tremcocpg.com